



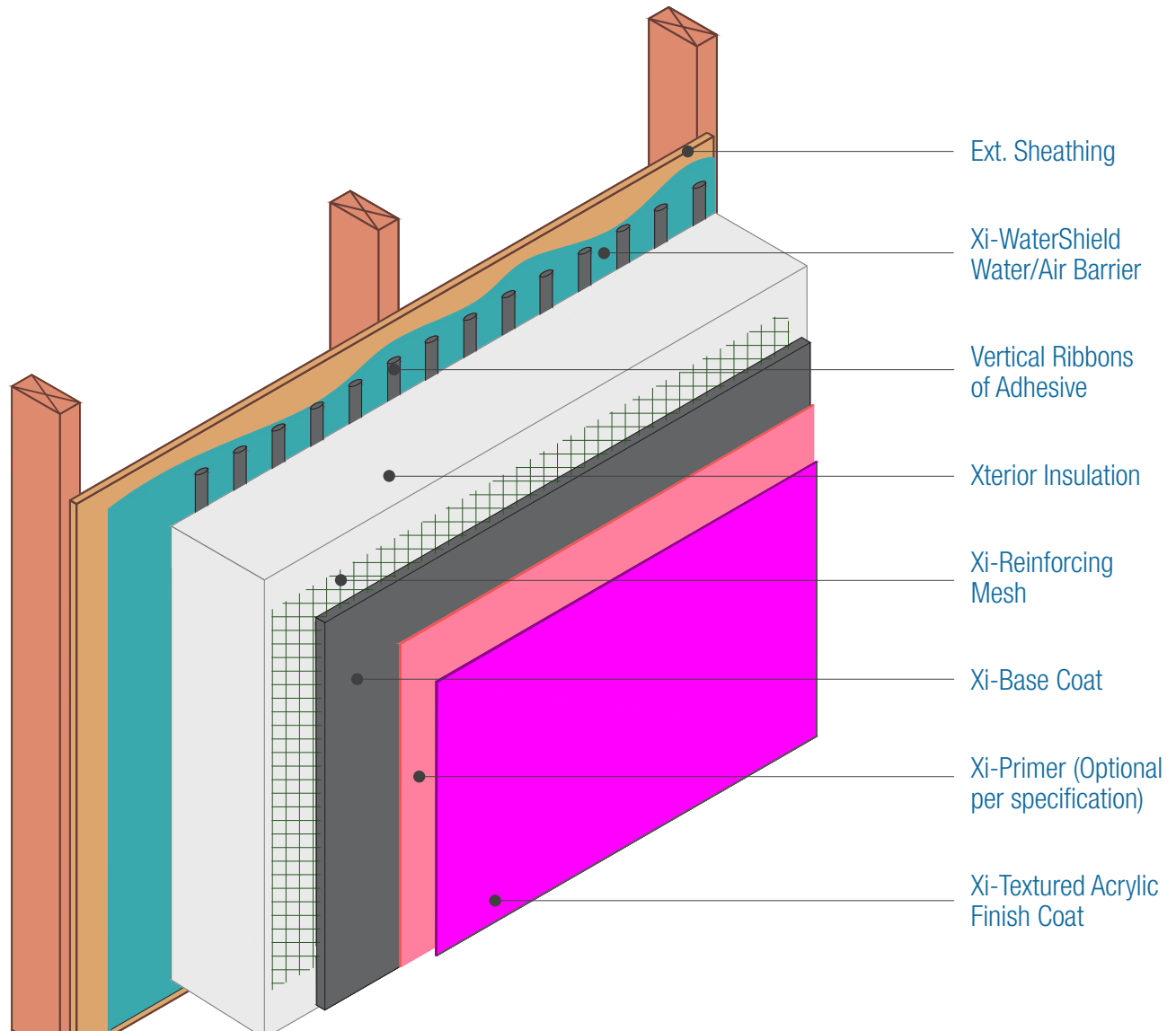
WaterShield Xterior Insulation Assembly Details



15262 Capital Port
San Antonio, TX 78249
1-833-899-0787
facadesxi.com

WaterShield Xterior Insulation Assembly Overview - Isometric

Date: 06-15-2021 | Detail: WSXI.I.1 v1



NOTES:

1. Install products per product datasheets and project specifications.

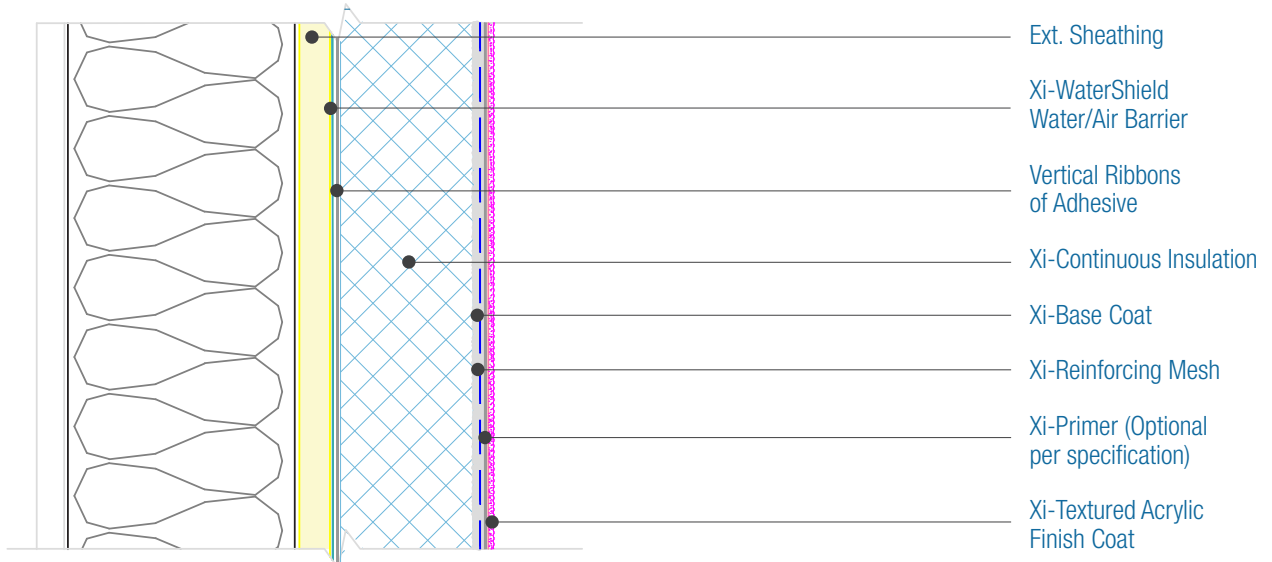
DISCLAIMER: FACADESXI details are recommendations that should be used for guidance only. There may be equivalent means of installation that are not shown in FACADESXI assembly details. All FACADESXI products shall be installed in accordance with FACADESXI product datasheets and all applicable building codes and industry standard practices. The design, engineering and final details incorporating any FACADESXI product are the sole responsibility of the project design professional. FACADESXI is not responsible for determining the acceptability and/or applicability of any FACADESXI product or detail for any specific project or condition. FACADESXI disclaims all liability for improper installation, workmanship, or design by a third-party. EXCEPT FOR ANY EXPRESS REPRESENTATIONS AND WARRANTIES BY FACADESXI, ALL IMPLIED WARRANTIES OF ANY KIND, INCLUDING BUT NOT LIMITED TO WARRANTIES OF MERCHANTABILITY OR FITNESS FOR A PARTICULAR PURPOSE OR COMPLIANCE WITH LAWS OR GOVERNMENT RULES OR REGULATIONS APPLICABLE TO THE PROJECT, ARE HEREBY DISCLAIMED. FACADESXI's website should always be consulted for the latest version of any details and/or product information. Contact FACADESXI for any technical assistance.



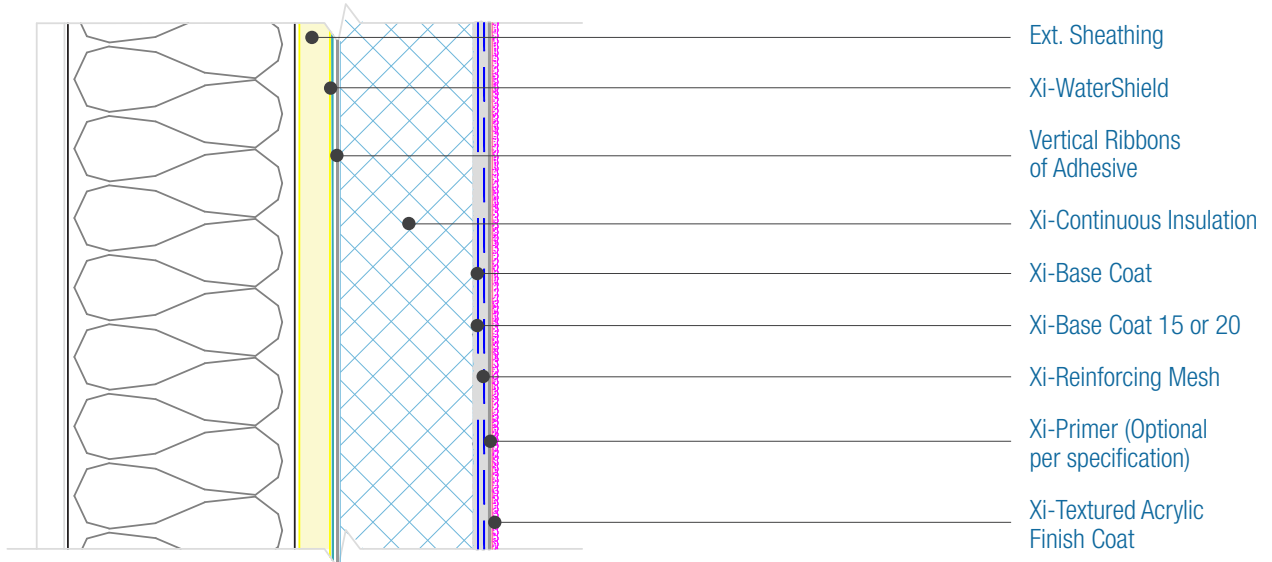
15262 Capital Port
 San Antonio, TX 78249
 1-833-899-0787
 facadesxi.com

WaterShield Xterior Insulation Assembly Overview

Date: 06-15-2021 | Detail: WSXI.I.2 v1



HIGH/ULTRA-HIGH IMPACT SYSTEM



NOTES:

1. For full assembly options, materials and placement of materials refer to the specific FACADESXI System Specifications.
2. FXI recommends High or Ultra High impact resistance on wall areas subjected to pedestrian traffic or other exposure to impact up, to a minimum height of 6 foot above grade.
3. Location of High impact Mesh must be shown on the project drawings.

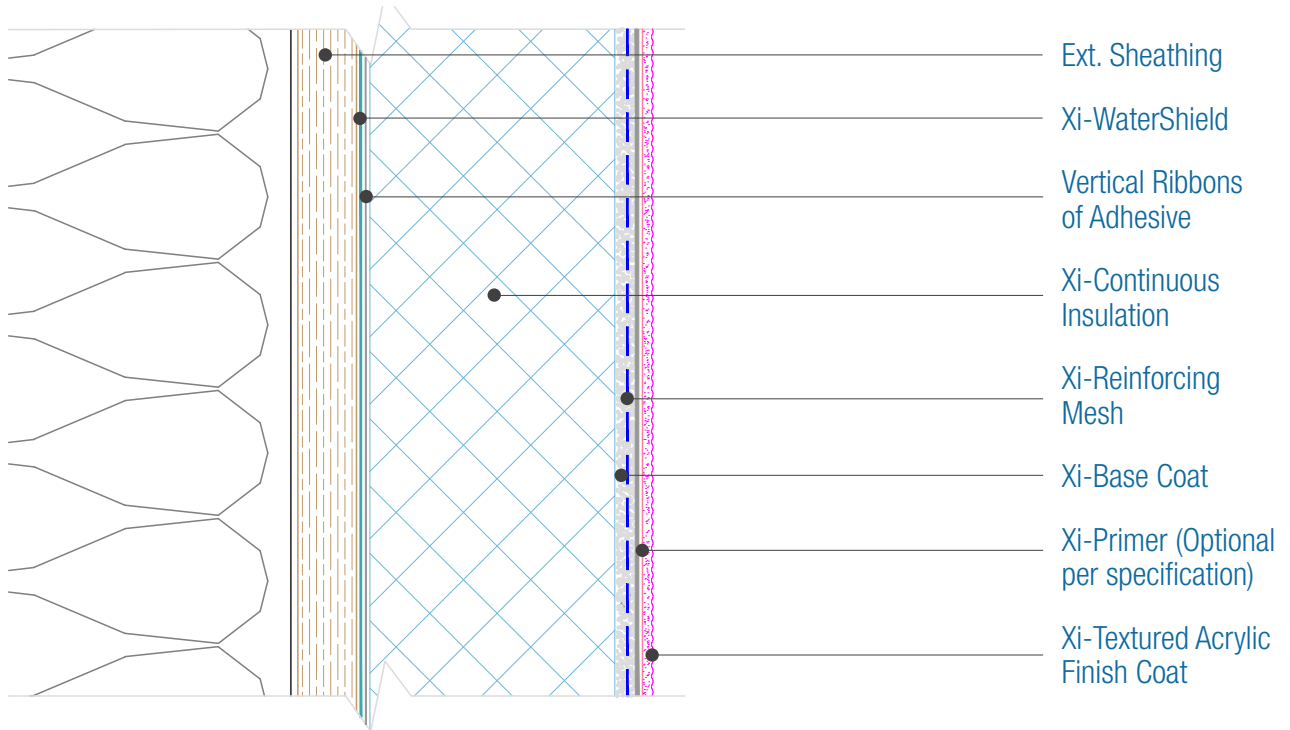
DISCLAIMER: FACADESXI details are recommendations that should be used for guidance only. There may be equivalent means of installation that are not shown in FACADESXI assembly details. All FACADESXI products shall be installed in accordance with FACADESXI product datasheets and all applicable building codes and industry standard practices. The design, engineering and final details incorporating any FACADESXI product are the sole responsibility of the project design professional. FACADESXI is not responsible for determining the acceptability and/or applicability of any FACADESXI product or detail for any specific project or condition. FACADESXI disclaims all liability for improper installation, workmanship, or design by a third-party. EXCEPT FOR ANY EXPRESS REPRESENTATIONS AND WARRANTIES BY FACADESXI, ALL IMPLIED WARRANTIES OF ANY KIND, INCLUDING BUT NOT LIMITED TO WARRANTIES OF MERCHANTABILITY OR FITNESS FOR A PARTICULAR PURPOSE OR COMPLIANCE WITH LAWS OR GOVERNMENT RULES OR REGULATIONS APPLICABLE TO THE PROJECT, ARE HEREBY DISCLAIMED. FACADESXI's website should always be consulted for the latest version of any details and/or product information. Contact FACADESXI for any technical assistance.



15262 Capital Port
 San Antonio, TX 78249
 1-833-899-0787
 facadesxi.com

WaterShield Xterior Insulation Assembly Components

Date: 06-15-2021 | Detail: WSXI.I.3 v1



Framing

- Wood Metal

Sheathing

- OSB
- Plywood
- Cement Board
- CMU
- Brick
- Fiberglass Faced Gypsum

Water / Air Barrier

- Xi-WaterShield
- WaterShield Joint Mesh
- WaterShield Flashing Tape
- Xi Flashfill

Means of Drainage / Attachment

- Vertical Adhesive Ribbons

Xi Continuous Insulation

- Expanded Polystyrene

Base Coat

- Xi-Acrylic Base Coat
- Xi-Dry Acrylic Base Coat

Reinforcement Mesh

- Xi-Mesh Xi-Mesh 6
 - Xi-Mesh 10
 - BearMat 15 BearMat 20
- BearMat Options Not Shown

Primer (Optional per specification)

- Xi-Alkali Resistant Primer

Xi-Textured Acrylic Finish Coat

- Smooth Fine Coarse

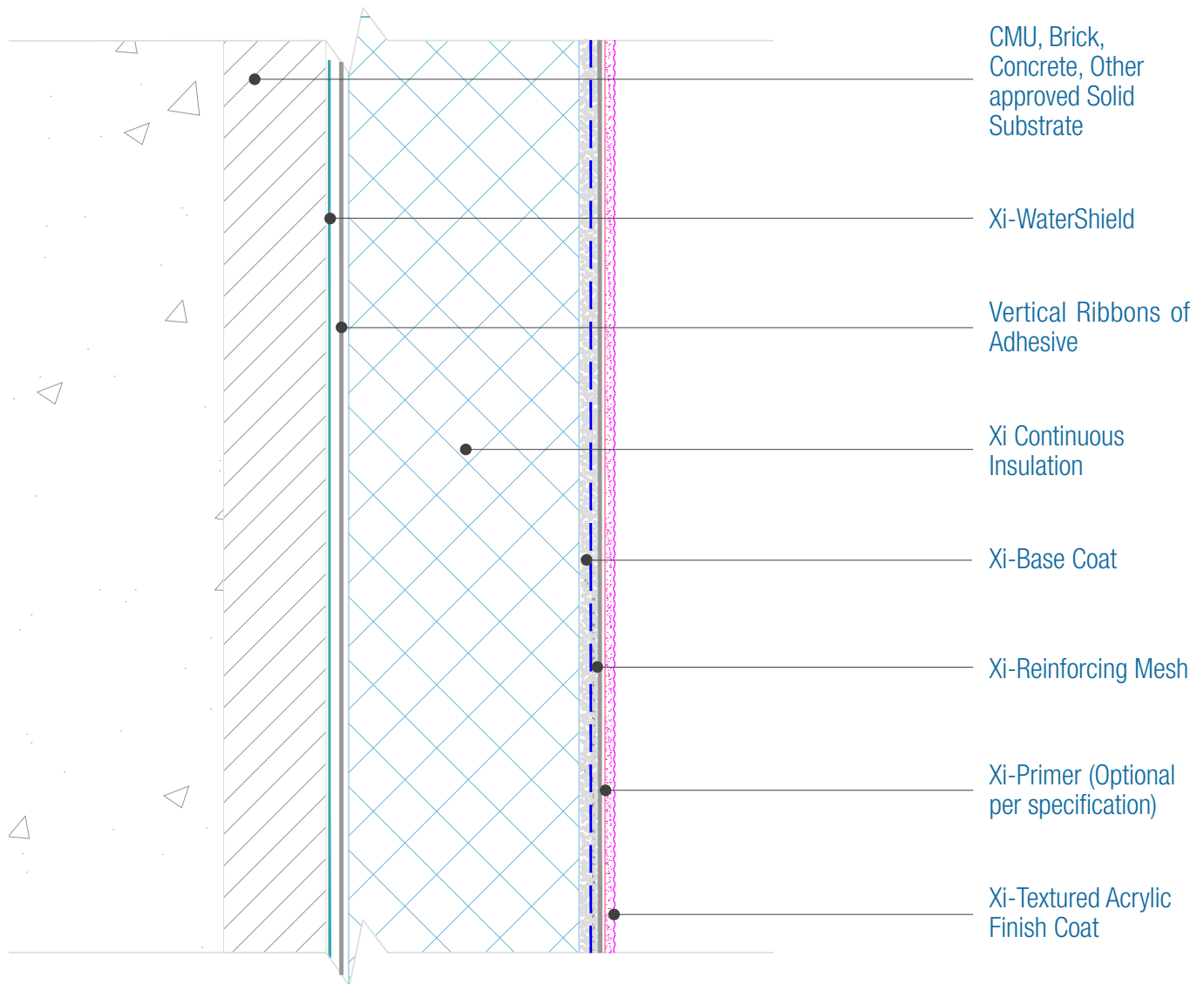
DISCLAIMER: FACADESXI details are recommendations that should be used for guidance only. There may be equivalent means of installation that are not shown in FACADESXI assembly details. All FACADESXI products shall be installed in accordance with FACADESXI product datasheets and all applicable building codes and industry standard practices. The design, engineering and final details incorporating any FACADESXI product are the sole responsibility of the project design professional. FACADESXI is not responsible for determining the acceptability and/or applicability of any FACADESXI product or detail for any specific project or condition. FACADESXI disclaims all liability for improper installation, workmanship, or design by a third-party. EXCEPT FOR ANY EXPRESS REPRESENTATIONS AND WARRANTIES BY FACADESXI, ALL IMPLIED WARRANTIES OF ANY KIND, INCLUDING BUT NOT LIMITED TO WARRANTIES OF MERCHANTABILITY OR FITNESS FOR A PARTICULAR PURPOSE OR COMPLIANCE WITH LAWS OR GOVERNMENT RULES OR REGULATIONS APPLICABLE TO THE PROJECT, ARE HEREBY DISCLAIMED. FACADESXI's website should always be consulted for the latest version of any details and/or product information. Contact FACADESXI for any technical assistance.



15262 Capital Port
San Antonio, TX 78249
1-833-899-0787
facadesxi.com

WaterShield Xterior Insulation CMU Overview

Date. 06-15-2021 | Detail. WSXI.I.4 v1



NOTES:

1. For full assembly options, materials and placement of materials refer to the specific FACADESXI System specifications.
2. FXI recommends High or Ultra High impact resistance on wall areas subjected to pedestrian traffic or other exposure to impact up, to a minimum height of 6 foot above grade.
3. Location of High impact Mesh must be shown on the project drawings.

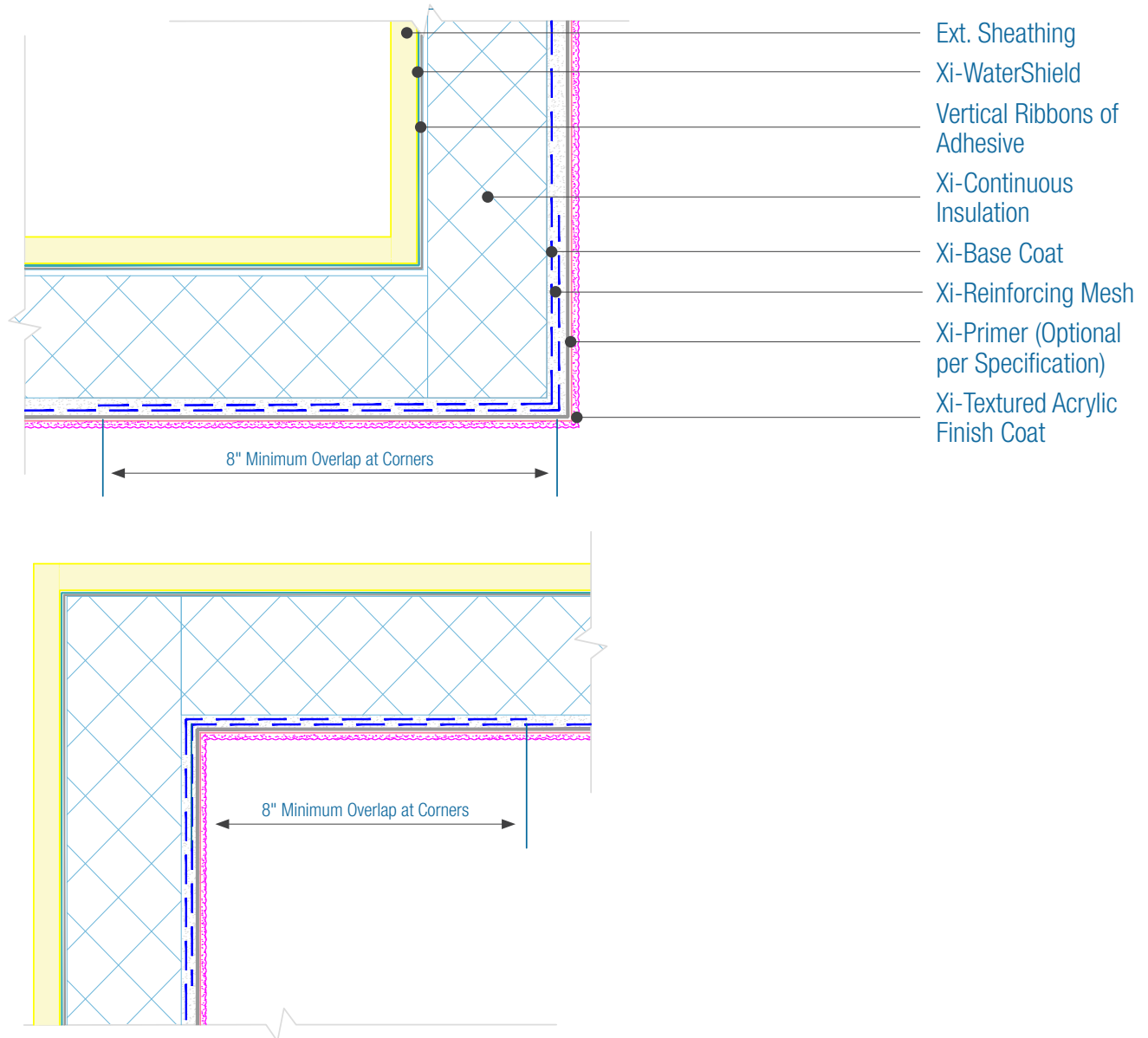
DISCLAIMER: FACADESXI details are recommendations that should be used for guidance only. There may be equivalent means of installation that are not shown in FACADESXI assembly details. All FACADESXI products shall be installed in accordance with FACADESXI product datasheets and all applicable building codes and industry standard practices. The design, engineering and final details incorporating any FACADESXI product are the sole responsibility of the project design professional. FACADESXI is not responsible for determining the acceptability and/or applicability of any FACADESXI product or detail for any specific project or condition. FACADESXI disclaims all liability for improper installation, workmanship, or design by a third-party. EXCEPT FOR ANY EXPRESS REPRESENTATIONS AND WARRANTIES BY FACADESXI, ALL IMPLIED WARRANTIES OF ANY KIND, INCLUDING BUT NOT LIMITED TO WARRANTIES OF MERCHANTABILITY OR FITNESS FOR A PARTICULAR PURPOSE OR COMPLIANCE WITH LAWS OR GOVERNMENT RULES OR REGULATIONS APPLICABLE TO THE PROJECT, ARE HEREBY DISCLAIMED. FACADESXI's website should always be consulted for the latest version of any details and/or product information. Contact FACADESXI for any technical assistance.



15262 Capital Port
San Antonio, TX 78249
1-833-899-0787
facadesxi.com

WaterShield Xterior Insulation Inside and Outside Corner

Date: 06-15-2021 | Detail: WSXI.I.5 v1



NOTES:

1. For full assembly options, materials and placement of materials refer to the specific FACADESXI System specifications.
2. Wrap Xi-Mesh a minimum of 8" around corners.
3. Detail shown for corners without anticipated movement.
4. Double wrap the outside corners with Xi-Mesh or use Corner Mesh.
5. Insulation Board Edges must be offset at corners.

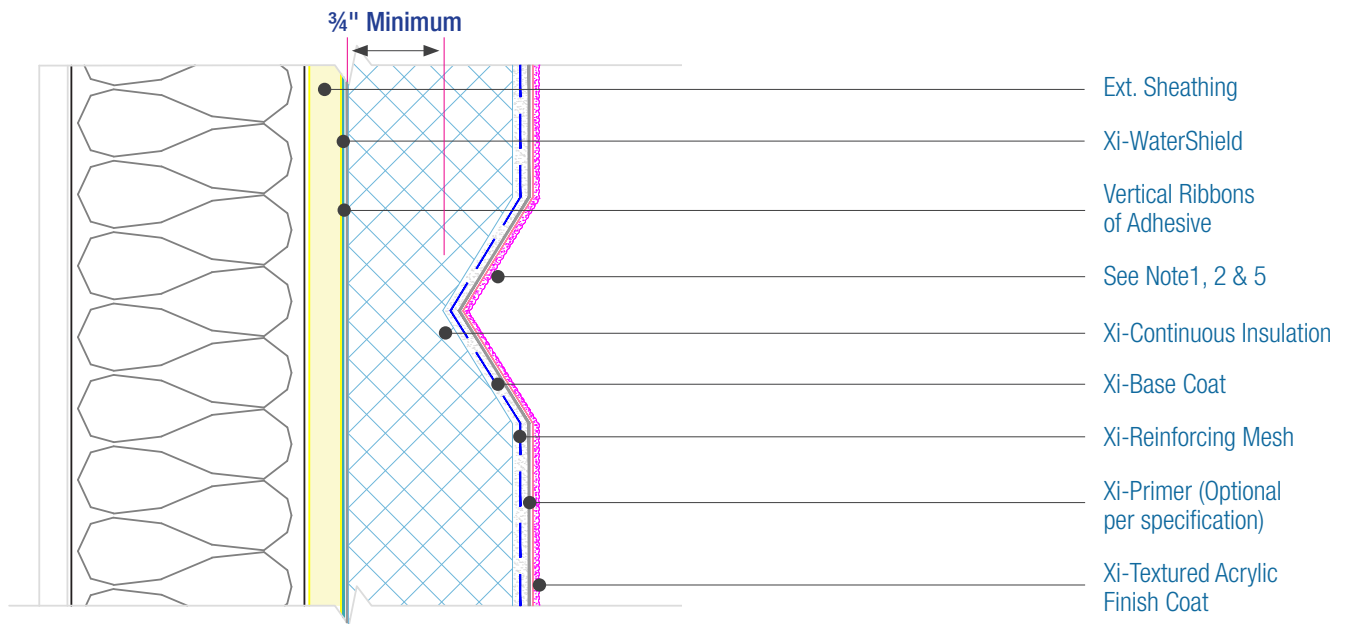
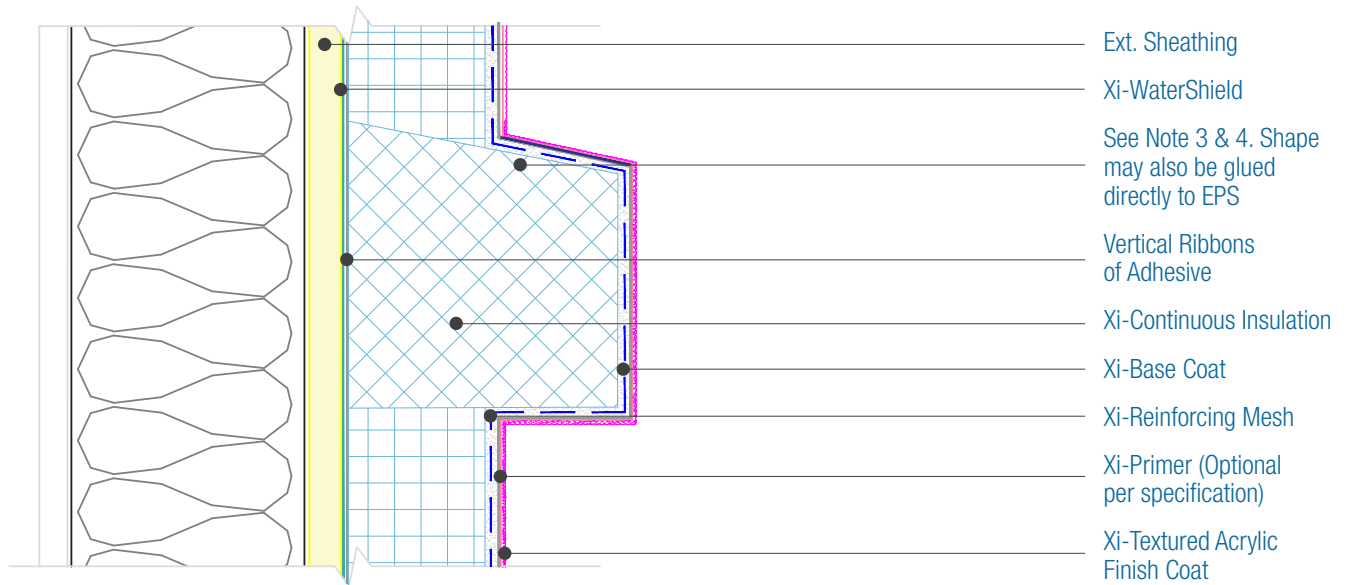
DISCLAIMER: FACADESXI details are recommendations that should be used for guidance only. There may be equivalent means of installation that are not shown in FACADESXI assembly details. All FACADESXI products shall be installed in accordance with FACADESXI product datasheets and all applicable building codes and industry standard practices. The design, engineering and final details incorporating any FACADESXI product are the sole responsibility of the project design professional. FACADESXI is not responsible for determining the acceptability and/or applicability of any FACADESXI product or detail for any specific project or condition. FACADESXI disclaims all liability for improper installation, workmanship, or design by a third-party. EXCEPT FOR ANY EXPRESS REPRESENTATIONS AND WARRANTIES BY FACADESXI, ALL IMPLIED WARRANTIES OF ANY KIND, INCLUDING BUT NOT LIMITED TO WARRANTIES OF MERCHANTABILITY OR FITNESS FOR A PARTICULAR PURPOSE OR COMPLIANCE WITH LAWS OR GOVERNMENT RULES OR REGULATIONS APPLICABLE TO THE PROJECT, ARE HEREBY DISCLAIMED. FACADESXI's website should always be consulted for the latest version of any details and/or product information. Contact FACADESXI for any technical assistance.



15262 Capital Port
 San Antonio, TX 78249
 1-833-899-0787
 facadesxi.com

WaterShield Xterior Insulation Typical Shape and Reveal

Date: 06-15-2021 | Detail. WSXI.I.6 v1



NOTES:

1. 3/4" of flat insulation board must remain after the reveal has been cut into the foam.
2. Do not place reveals where insulation boards abut.
3. Horizontal/Sloped surfaces greater than 2 inches of Foam shapes must be coated with Xi - WaterLock
4. Slope Minimums; Standing Snow areas - 6:12, No Standing Snow - 3:12
5. For small reveals, use Xi-Detail Mesh through reveals continuing a minimum of 2 1/2" on each side of the reveal and follow specification instructions.

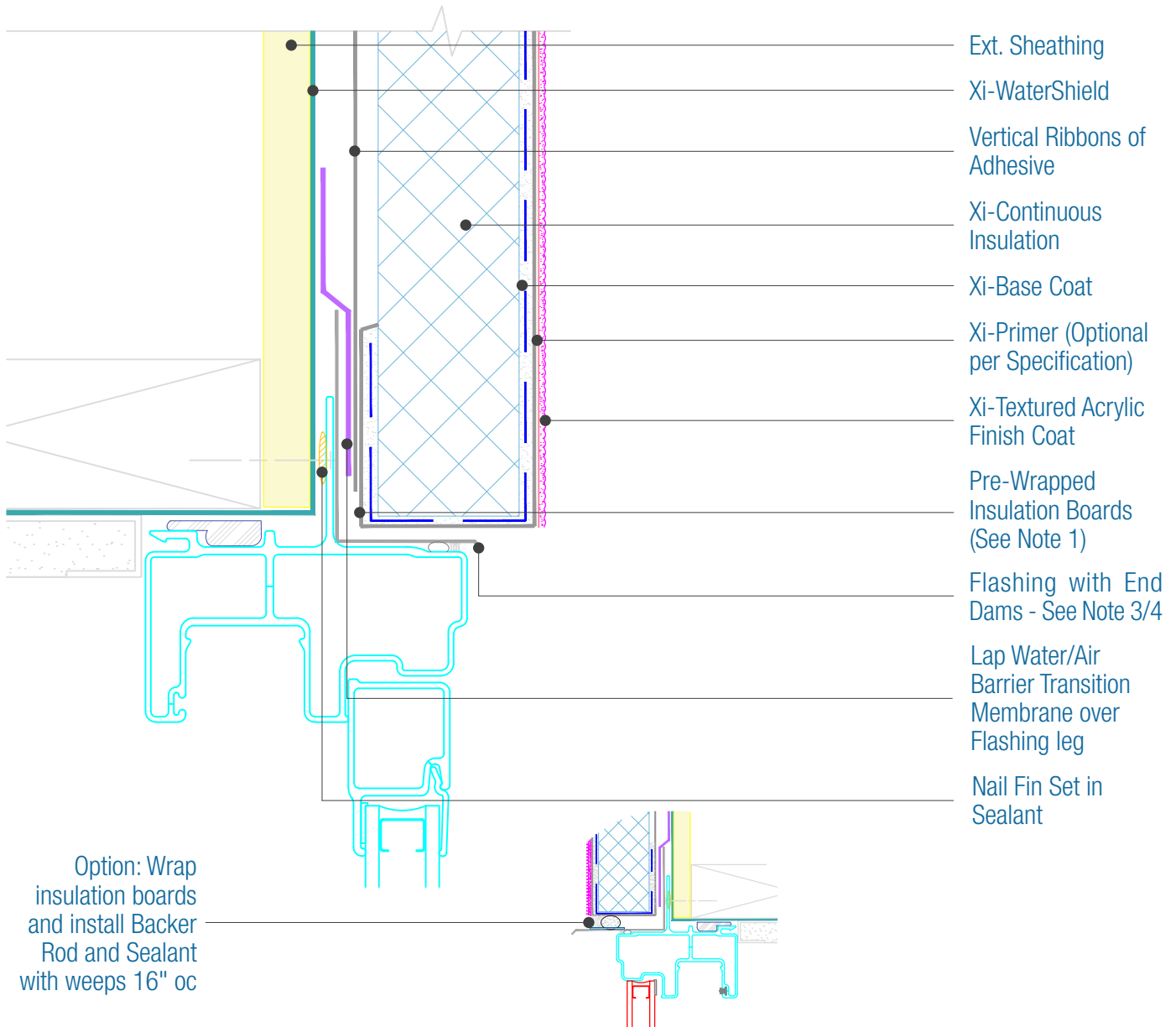
DISCLAIMER: FACADESXI details are recommendations that should be used for guidance only. There may be equivalent means of installation that are not shown in FACADESXI assembly details. All FACADESXI products shall be installed in accordance with FACADESXI product datasheets and all applicable building codes and industry standard practices. The design, engineering and final details incorporating any FACADESXI product are the sole responsibility of the project design professional. FACADESXI is not responsible for determining the acceptability and/or applicability of any FACADESXI product or detail for any specific project or condition. FACADESXI disclaims all liability for improper installation, workmanship, or design by a third-party. EXCEPT FOR ANY EXPRESS REPRESENTATIONS AND WARRANTIES BY FACADESXI, ALL IMPLIED WARRANTIES OF ANY KIND, INCLUDING BUT NOT LIMITED TO WARRANTIES OF MERCHANTABILITY OR FITNESS FOR A PARTICULAR PURPOSE OR COMPLIANCE WITH LAWS OR GOVERNMENT RULES OR REGULATIONS APPLICABLE TO THE PROJECT, ARE HEREBY DISCLAIMED. FACADESXI's website should always be consulted for the latest version of any details and/or product information. Contact FACADESXI for any technical assistance.



15262 Capital Port
San Antonio, TX 78249
1-833-899-0787
facadesxi.com

WaterShield Xterior Insulation Nail Fin Window Head

Date: 06-15-2021 | Detail: WSXI.II.1 v1



NOTES:

1. Drainage must be provide by an acceptable FXI Method. For noncombustible construction, use a Pre-wrapped insulation board or contact FXI.
2. Provide seals at all penetrations in accordance with the window manufacturer to ensure airtight ness and no water intrusion into the wall.
3. Responsibility of the flashing is not necessarily that of the plastering contractor and should be denoted in the contract documents.
4. Flashing must be installed with End Dams and be completely watertight
5. FXI WaterShield transition and accessory products and installation can be found in the project specifications, product datasheets and the WaterShield Details.

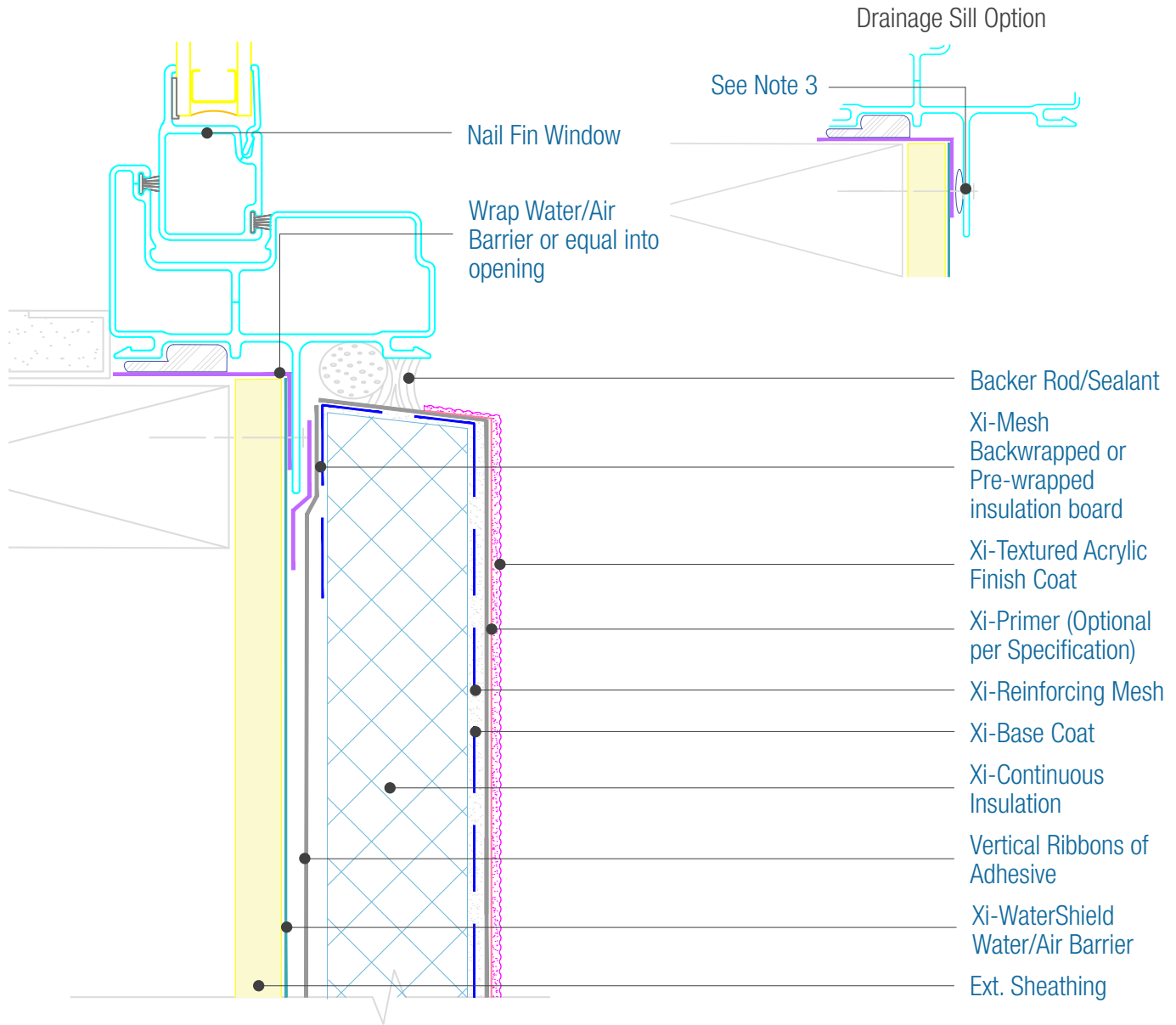
DISCLAIMER: FACADESXI details are recommendations that should be used for guidance only. There may be equivalent means of installation that are not shown in FACADESXI assembly details. All FACADESXI products shall be installed in accordance with FACADESXI product datasheets and all applicable building codes and industry standard practices. The design, engineering and final details incorporating any FACADESXI product are the sole responsibility of the project design professional. FACADESXI is not responsible for determining the acceptability and/or applicability of any FACADESXI product or detail for any specific project or condition. FACADESXI disclaims all liability for improper installation, workmanship, or design by a third-party. EXCEPT FOR ANY EXPRESS REPRESENTATIONS AND WARRANTIES BY FACADESXI, ALL IMPLIED WARRANTIES OF ANY KIND, INCLUDING BUT NOT LIMITED TO WARRANTIES OF MERCHANTABILITY OR FITNESS FOR A PARTICULAR PURPOSE OR COMPLIANCE WITH LAWS OR GOVERNMENT RULES OR REGULATIONS APPLICABLE TO THE PROJECT, ARE HEREBY DISCLAIMED. FACADESXI's website should always be consulted for the latest version of any details and/or product information. Contact FACADESXI for any technical assistance.



15262 Capital Port
 San Antonio, TX 78249
 1-833-899-0787
 facadesxi.com

WaterShield Xterior Insulation Nail-Fin Window Sill and Jamb

Date: 06-15-2021 | Detail: WSXI.II.2 v1



NOTES:

1. There must be continuous airtightness over the entire building enclosure, where required by code. The actual project detail must show this continuity.
2. Provide seals at all penetrations in accordance with the window manufacturer to ensure airtightness and no water intrusion into the wall.
3. At Sill, for a window that will drain behind the fin, spacers should be installed to accommodate drainage and not sealed, use Drainage Sill Option.
4. Responsibility of the flashing is not necessarily that of the plastering contractor and should be denoted in the contract documents.
5. For Rough Opening Protection and options see Water/Air Barrier Manufacturers installation instruction

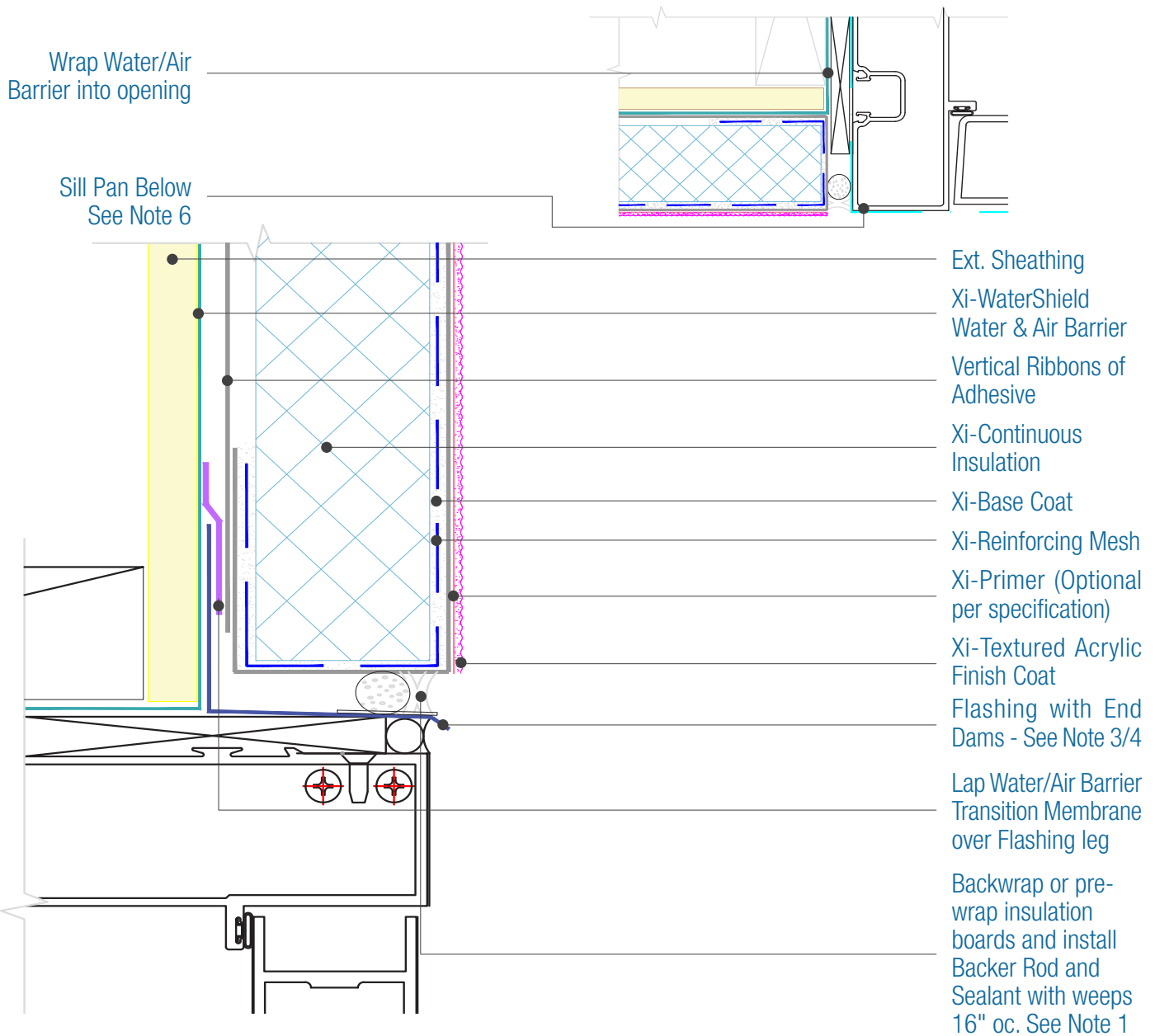
DISCLAIMER: FACADESXI details are recommendations that should be used for guidance only. There may be equivalent means of installation that are not shown in FACADESXI assembly details. All FACADESXI products shall be installed in accordance with FACADESXI product datasheets and all applicable building codes and industry standard practices. The design, engineering and final details incorporating any FACADESXI product are the sole responsibility of the project design professional. FACADESXI is not responsible for determining the acceptability and/or applicability of any FACADESXI product or detail for any specific project or condition. FACADESXI disclaims all liability for improper installation, workmanship, or design by a third-party. EXCEPT FOR ANY EXPRESS REPRESENTATIONS AND WARRANTIES BY FACADESXI, ALL IMPLIED WARRANTIES OF ANY KIND, INCLUDING BUT NOT LIMITED TO WARRANTIES OF MERCHANTABILITY OR FITNESS FOR A PARTICULAR PURPOSE OR COMPLIANCE WITH LAWS OR GOVERNMENT RULES OR REGULATIONS APPLICABLE TO THE PROJECT, ARE HEREBY DISCLAIMED. FACADESXI's website should always be consulted for the latest version of any details and/or product information. Contact FACADESXI for any technical assistance.



15262 Capital Port
San Antonio, TX 78249
1-833-899-0787
facadesxi.com

WaterShield Xterior Insulation Storefront Window Head and Jamb

Date. 06-15-2021 | Detail. WSXI.II.3 v1



NOTES:

1. Drainage must be provide by an acceptable FXI Method. For noncombustible construction, use a Pre-wrapped insulation board or contact FXI.
2. Provide seals at all penetrations in accordance with the window manufacturer to ensure airtight ness and no water intrusion into the wall.
3. Responsibility of the flashing is not necessarily that of the plastering contractor and should be denoted in the contract documents.
4. Flashing must be installed with End Dams and be completely watertight
5. FXI WaterShield transition and accessory products and installation can be found in the project specifications, product datasheets and the WaterShield Details.
6. The Door must be set in a pan flashing and rough opening protection wrapped into that pan flashing.

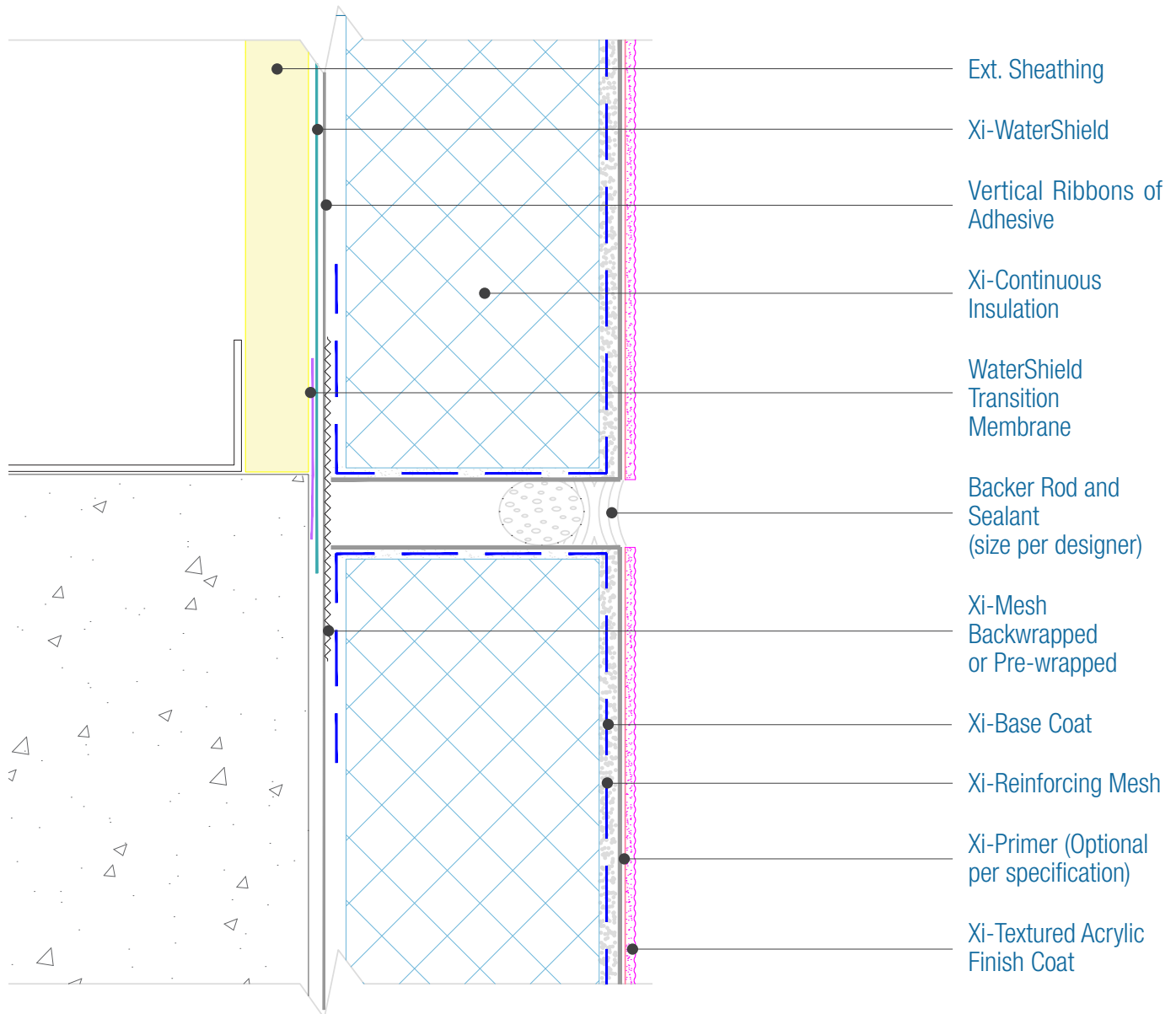
DISCLAIMER: FACADESXI details are recommendations that should be used for guidance only. There may be equivalent means of installation that are not shown in FACADESXI assembly details. All FACADESXI products shall be installed in accordance with FACADESXI product datasheets and all applicable building codes and industry standard practices. The design, engineering and final details incorporating any FACADESXI product are the sole responsibility of the project design professional. FACADESXI is not responsible for determining the acceptability and/or applicability of any FACADESXI product or detail for any specific project or condition. FACADESXI disclaims all liability for improper installation, workmanship, or design by a third-party. EXCEPT FOR ANY EXPRESS REPRESENTATIONS AND WARRANTIES BY FACADESXI, ALL IMPLIED WARRANTIES OF ANY KIND, INCLUDING BUT NOT LIMITED TO WARRANTIES OF MERCHANTABILITY OR FITNESS FOR A PARTICULAR PURPOSE OR COMPLIANCE WITH LAWS OR GOVERNMENT RULES OR REGULATIONS APPLICABLE TO THE PROJECT, ARE HEREBY DISCLAIMED. FACADESXI's website should always be consulted for the latest version of any details and/or product information. Contact FACADESXI for any technical assistance.



15262 Capital Port
San Antonio, TX 78249
1-833-899-0787
facadesxi.com

WaterShield Xterior Insulation Expansion Joint at Dissimilar Substrate

Date: 06-15-2021 | Detail: WSXI.III.1 v1



NOTES:

1. For full assembly options, materials and placement of materials refer to the specific FACADESXI System specifications.
2. Expansion joint placement should be installed per the system specifications and is the sole responsibility of the design professional.
3. As a horizontal joint, a means of drainage must run continuously behind the backer rod and sealant. This can be accomplished with plastic lath, or a drainage material that will allow for back wrapping. Alternatively the insulation board can be pre-wrapped and the drainage run continuous with vertical ribbons of adhesive. See project drawings for locations that required drainage /flashing to the exterior.
4. When applied as a vertical joint, ensure that the backwrap does not embed the drainage of the system.

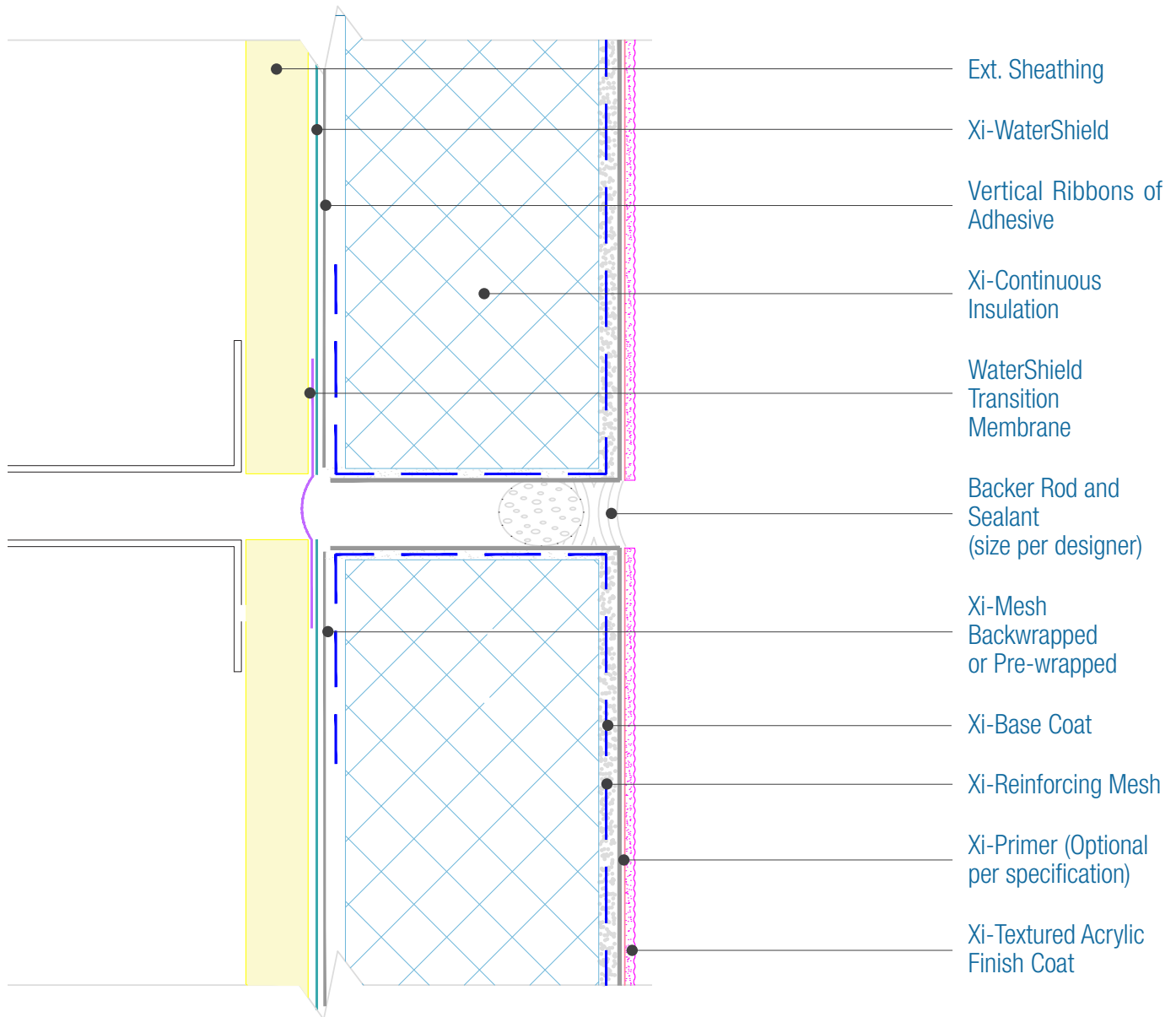
DISCLAIMER: FACADESXI details are recommendations that should be used for guidance only. There may be equivalent means of installation that are not shown in FACADESXI assembly details. All FACADESXI products shall be installed in accordance with FACADESXI product datasheets and all applicable building codes and industry standard practices. The design, engineering and final details incorporating any FACADESXI product are the sole responsibility of the project design professional. FACADESXI is not responsible for determining the acceptability and/or applicability of any FACADESXI product or detail for any specific project or condition. FACADESXI disclaims all liability for improper installation, workmanship, or design by a third-party. EXCEPT FOR ANY EXPRESS REPRESENTATIONS AND WARRANTIES BY FACADESXI, ALL IMPLIED WARRANTIES OF ANY KIND, INCLUDING BUT NOT LIMITED TO WARRANTIES OF MERCHANTABILITY OR FITNESS FOR A PARTICULAR PURPOSE OR COMPLIANCE WITH LAWS OR GOVERNMENT RULES OR REGULATIONS APPLICABLE TO THE PROJECT, ARE HEREBY DISCLAIMED. FACADESXI's website should always be consulted for the latest version of any details and/or product information. Contact FACADESXI for any technical assistance.



15262 Capital Port
 San Antonio, TX 78249
 1-833-899-0787
 facadestri.com

WaterShield Xterior Insulation Vertical Expansion Joint

Date: 06-15-2021 | Detail: WSXI.III.2 v1



- Ext. Sheathing
- Xi-WaterShield
- Vertical Ribbons of Adhesive
- Xi-Continuous Insulation
- WaterShield Transition Membrane
- Backer Rod and Sealant (size per designer)
- Xi-Mesh Backwrapped or Pre-wrapped
- Xi-Base Coat
- Xi-Reinforcing Mesh
- Xi-Primer (Optional per specification)
- Xi-Textured Acrylic Finish Coat

NOTES:

1. For full assembly options, materials and placement of materials refer to the specific FACADESXI System specifications.
2. Ensure that the backwrap does not embed the drainage of the system.
3. Expansion joint placement is the sole responsibility of the design professional and should be installed per the system specifications.

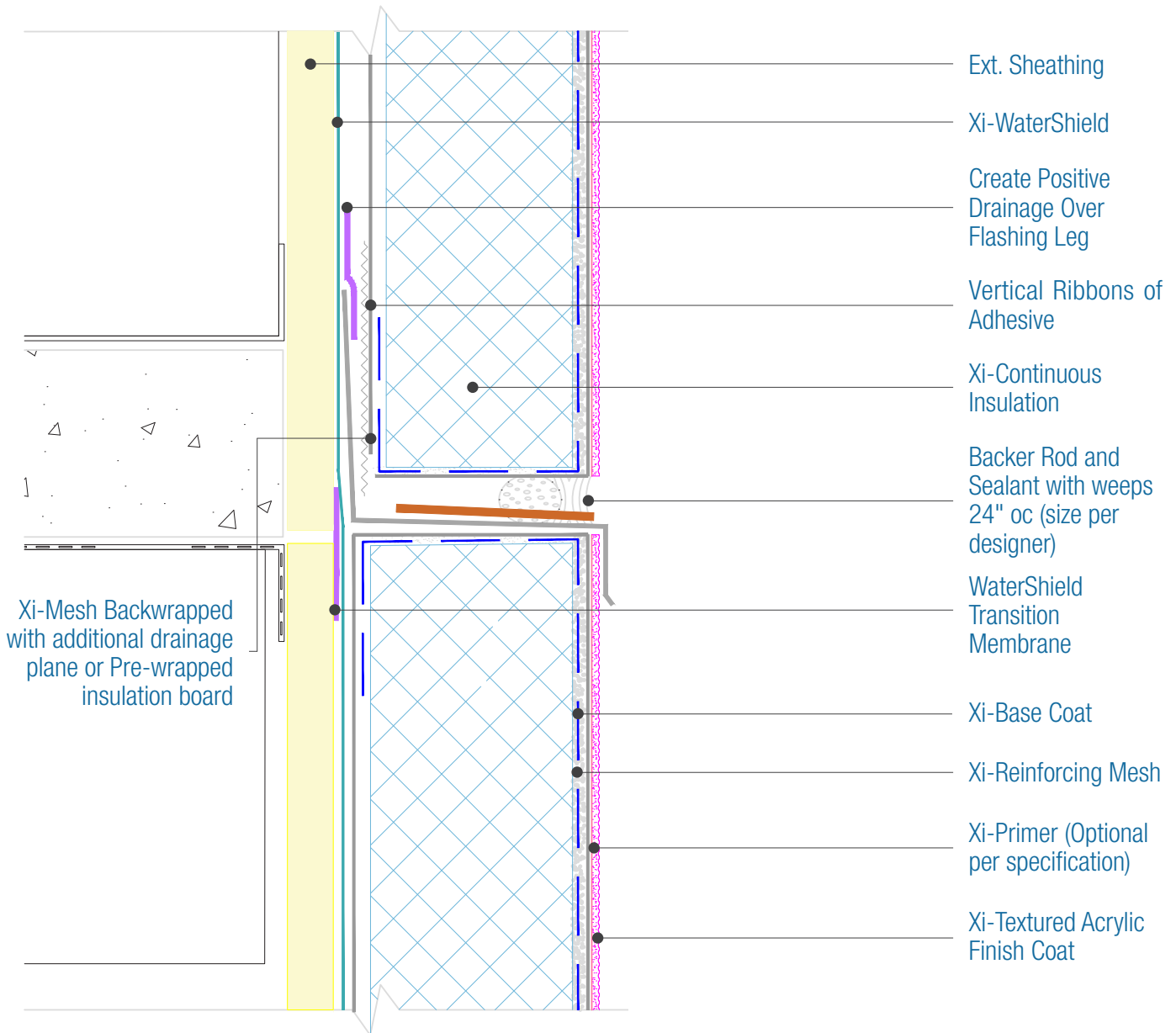
DISCLAIMER: FACADESXI details are recommendations that should be used for guidance only. There may be equivalent means of installation that are not shown in FACADESXI assembly details. All FACADESXI products shall be installed in accordance with FACADESXI product datasheets and all applicable building codes and industry standard practices. The design, engineering and final details incorporating any FACADESXI product are the sole responsibility of the project design professional. FACADESXI is not responsible for determining the acceptability and/or applicability of any FACADESXI product or detail for any specific project or condition. FACADESXI disclaims all liability for improper installation, workmanship, or design by a third-party. EXCEPT FOR ANY EXPRESS REPRESENTATIONS AND WARRANTIES BY FACADESXI, ALL IMPLIED WARRANTIES OF ANY KIND, INCLUDING BUT NOT LIMITED TO WARRANTIES OF MERCHANTABILITY OR FITNESS FOR A PARTICULAR PURPOSE OR COMPLIANCE WITH LAWS OR GOVERNMENT RULES OR REGULATIONS APPLICABLE TO THE PROJECT, ARE HEREBY DISCLAIMED. FACADESXI's website should always be consulted for the latest version of any details and/or product information. Contact FACADESXI for any technical assistance.



15262 Capital Port
 San Antonio, TX 78249
 1-833-899-0787
 facadesxi.com

WaterShield Xterior Insulation Expansion Joint at Floorline

Date. 06-15-2021 | Detail. WSXI.III.3 v1



NOTES:

1. For full assembly options, materials and placement of materials refer to the specific FACADESXI System specifications.
2. A means of drainage must run continuously behind backwrap.
3. See project drawings for locations that required drainage /flashing to the exterior.
4. FXI recommends drainage, at a minimum of every third floor.
5. Expansion joint placement is the sole responsibility of the design professional and should be installed per the system specifications.

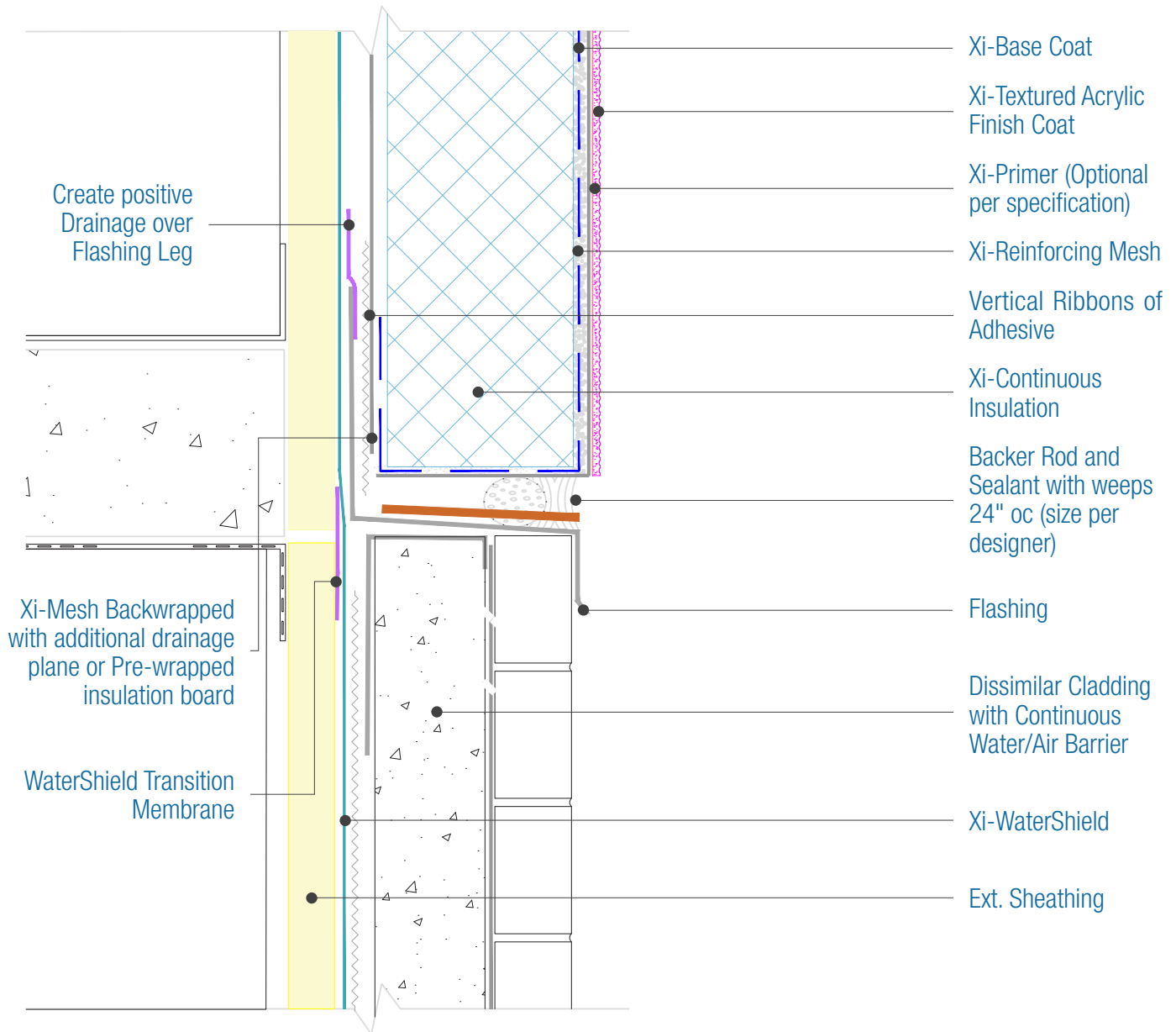
DISCLAIMER: FACADESXI details are recommendations that should be used for guidance only. There may be equivalent means of installation that are not shown in FACADESXI assembly details. All FACADESXI products shall be installed in accordance with FACADESXI product datasheets and all applicable building codes and industry standard practices. The design, engineering and final details incorporating any FACADESXI product are the sole responsibility of the project design professional. FACADESXI is not responsible for determining the acceptability and/or applicability of any FACADESXI product or detail for any specific project or condition. FACADESXI disclaims all liability for improper installation, workmanship, or design by a third-party. EXCEPT FOR ANY EXPRESS REPRESENTATIONS AND WARRANTIES BY FACADESXI, ALL IMPLIED WARRANTIES OF ANY KIND, INCLUDING BUT NOT LIMITED TO WARRANTIES OF MERCHANTABILITY OR FITNESS FOR A PARTICULAR PURPOSE OR COMPLIANCE WITH LAWS OR GOVERNMENT RULES OR REGULATIONS APPLICABLE TO THE PROJECT, ARE HEREBY DISCLAIMED. FACADESXI's website should always be consulted for the latest version of any details and/or product information. Contact FACADESXI for any technical assistance.



15262 Capital Port
 San Antonio, TX 78249
 1-833-899-0787
 facadesxi.com

WaterShield Xterior Insulation Expansion Joint at Dissimilar Cladding

Date. 06-15-2021 | Detail. WSXI.III.4 v1



NOTES:

1. For full assembly options, materials and placement of materials refer to the specific FACADESXI System specifications.
2. A means of drainage must run continuously behind backwrap.
3. Expansion joint placement is the sole responsibility of the design professional and should be installed per the system specifications.
4. See project drawings for locations that required drainage /flashing to the exterior.

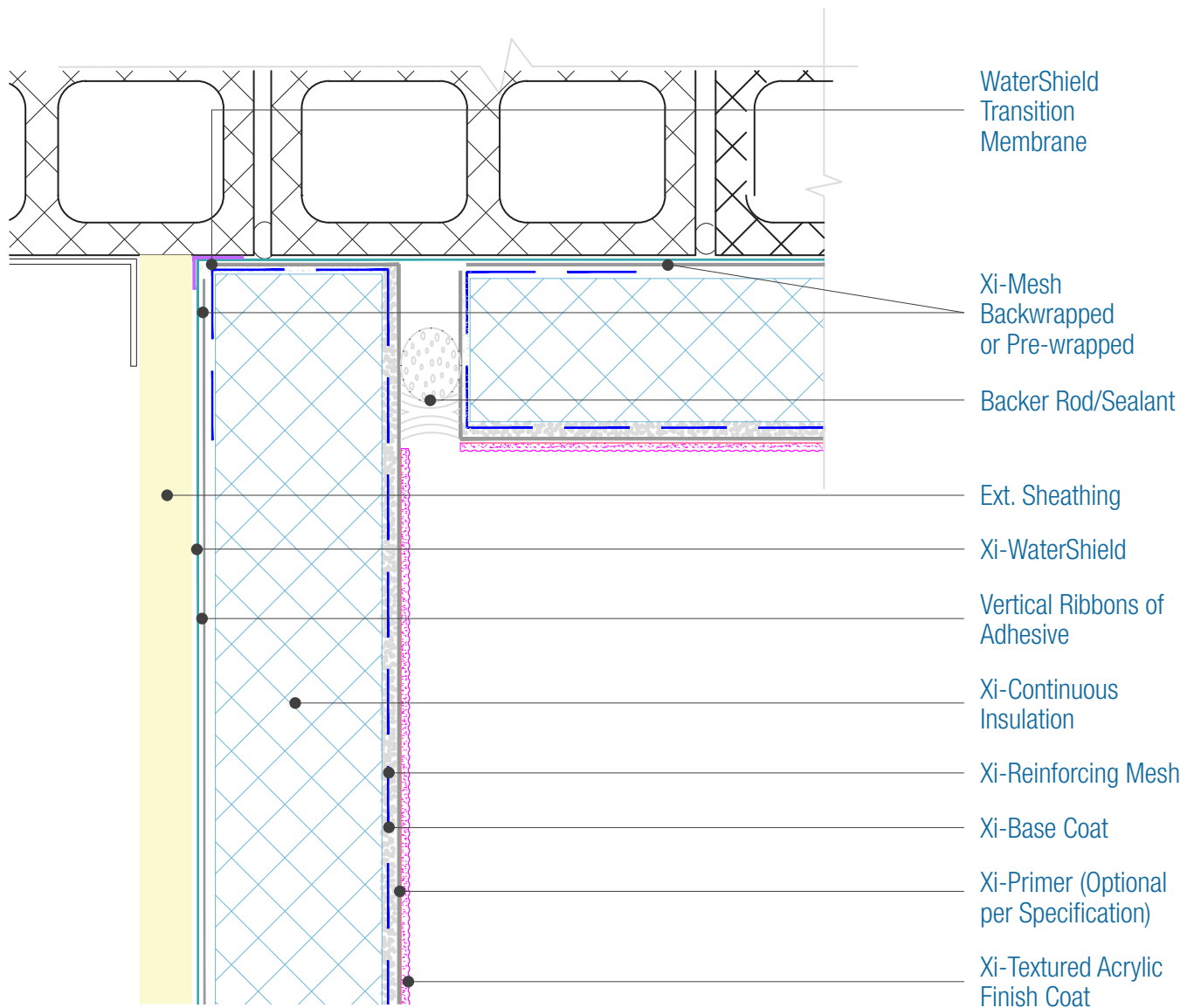
DISCLAIMER: FACADESXI details are recommendations that should be used for guidance only. There may be equivalent means of installation that are not shown in FACADESXI assembly details. All FACADESXI products shall be installed in accordance with FACADESXI product datasheets and all applicable building codes and industry standard practices. The design, engineering and final details incorporating any FACADESXI product are the sole responsibility of the project design professional. FACADESXI is not responsible for determining the acceptability and/or applicability of any FACADESXI product or detail for any specific project or condition. FACADESXI disclaims all liability for improper installation, workmanship, or design by a third-party. EXCEPT FOR ANY EXPRESS REPRESENTATIONS AND WARRANTIES BY FACADESXI, ALL IMPLIED WARRANTIES OF ANY KIND, INCLUDING BUT NOT LIMITED TO WARRANTIES OF MERCHANTABILITY OR FITNESS FOR A PARTICULAR PURPOSE OR COMPLIANCE WITH LAWS OR GOVERNMENT RULES OR REGULATIONS APPLICABLE TO THE PROJECT, ARE HEREBY DISCLAIMED. FACADESXI's website should always be consulted for the latest version of any details and/or product information. Contact FACADESXI for any technical assistance.



15262 Capital Port
San Antonio, TX 78249
1-833-899-0787
facadesxi.com

WaterShield Xterior Insulation Expansion Joint at Inside Corner

Date. 06-15-2021 | Detail. WSXI.III.5 v1



NOTES:

1. For full assembly options, materials and placement of materials refer to the specific FACADESXi System specifications.
2. Reinforcing Mesh may be backwrapped or pre-wrapped fully encapsulating the exposed insulation board.
3. Expansion joint placement should be installed per the system specifications and is the sole responsibility of the design professional.

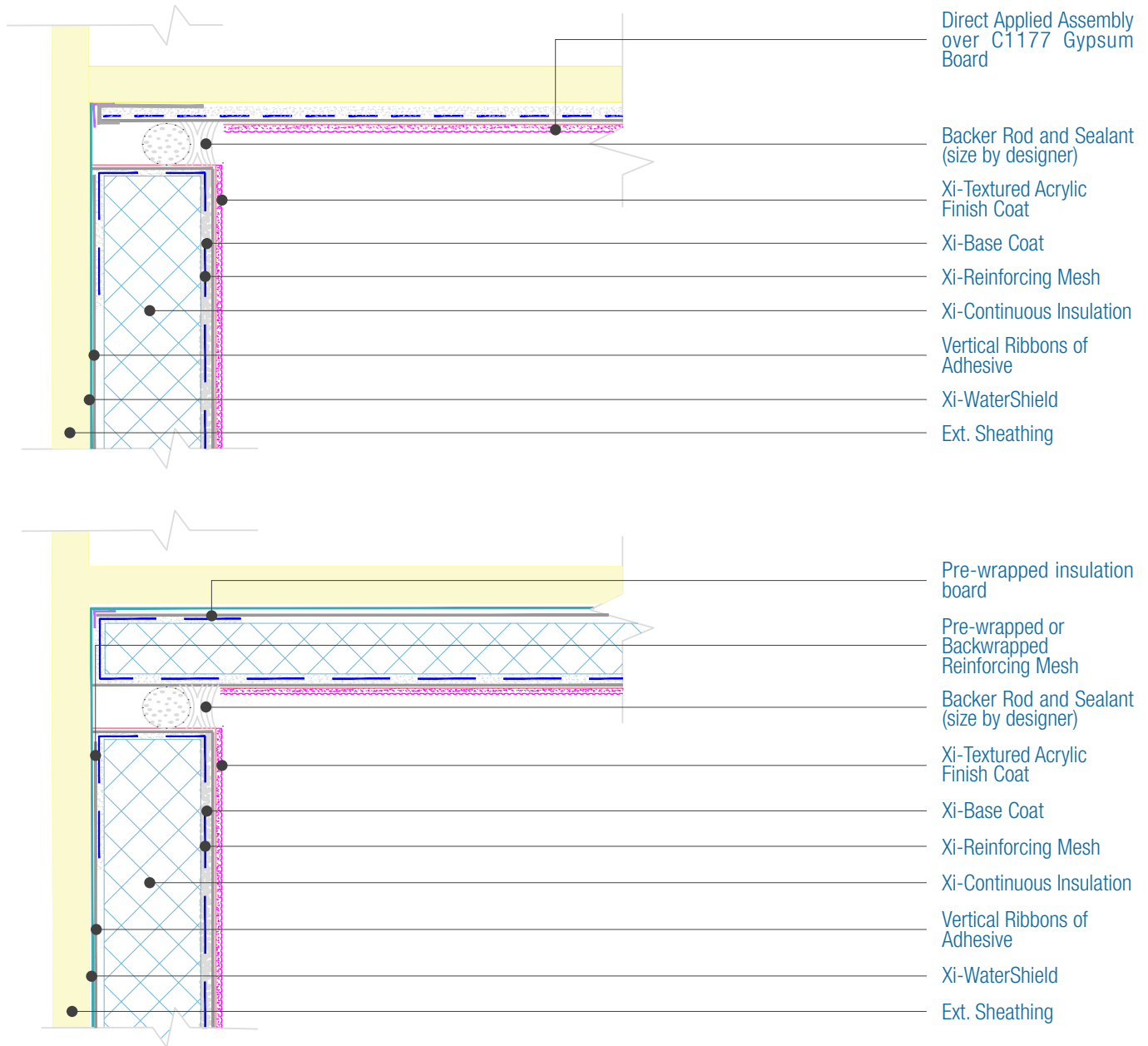
DISCLAIMER: FACADESXi details are recommendations that should be used for guidance only. There may be equivalent means of installation that are not shown in FACADESXi assembly details. All FACADESXi products shall be installed in accordance with FACADESXi product datasheets and all applicable building codes and industry standard practices. The design, engineering and final details incorporating any FACADESXi product are the sole responsibility of the project design professional. FACADESXi is not responsible for determining the acceptability and/or applicability of any FACADESXi product or detail for any specific project or condition. FACADESXi disclaims all liability for improper installation, workmanship, or design by a third-party. EXCEPT FOR ANY EXPRESS REPRESENTATIONS AND WARRANTIES BY FACADESXi, ALL IMPLIED WARRANTIES OF ANY KIND, INCLUDING BUT NOT LIMITED TO WARRANTIES OF MERCHANTABILITY OR FITNESS FOR A PARTICULAR PURPOSE OR COMPLIANCE WITH LAWS OR GOVERNMENT RULES OR REGULATIONS APPLICABLE TO THE PROJECT, ARE HEREBY DISCLAIMED. FACADESXi's website should always be consulted for the latest version of any details and/or product information. Contact FACADESXi for any technical assistance.



15262 Capital Port
 San Antonio, TX 78249
 1-833-899-0787
 facadesxi.com

WaterShield Xterior Insulation Wall to Soffit

Date. 06-15-2021 | Detail. WSXI.IV.1 v1



NOTES:

1. For full assembly options, materials and placement of materials refer to the specific FACADESXI System specifications.
2. Insulation boards on soffits may not be applied in enclosed areas.
3. See DAFS specification for soffit application.
4. A water resistive barrier is not required on non exposed soffits, however if an air barrier is required, the full system should be installed. The lamina may not be installed directly over WaterShield.

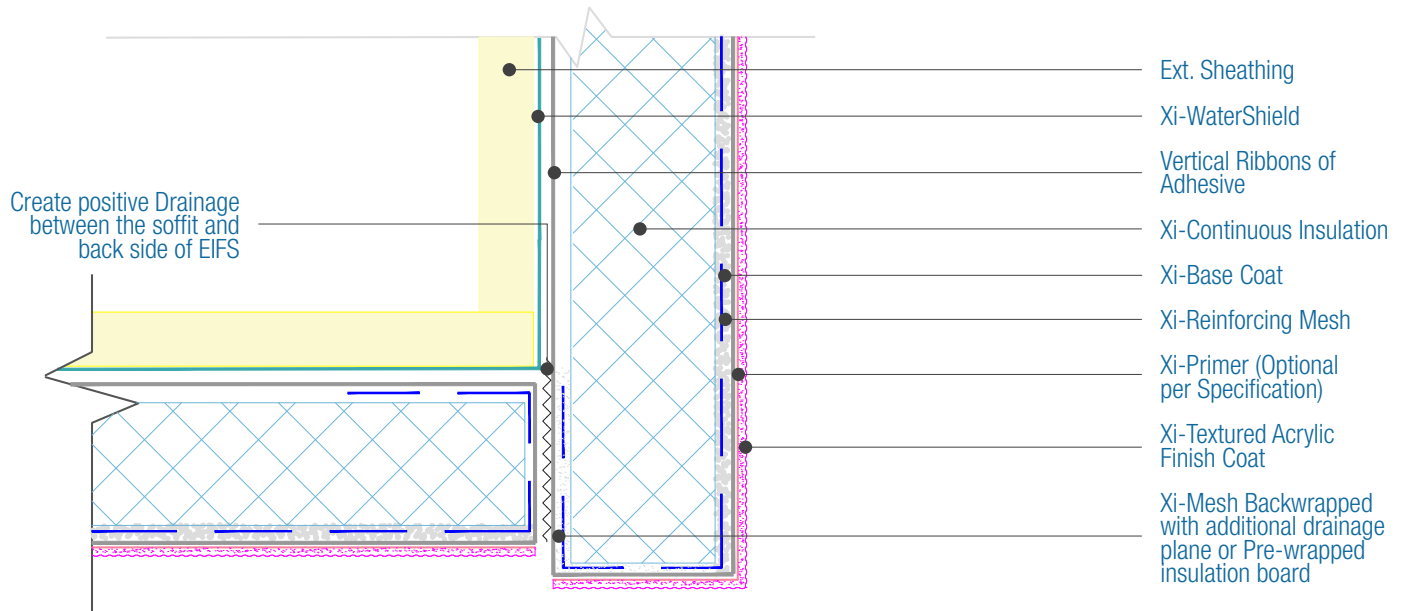
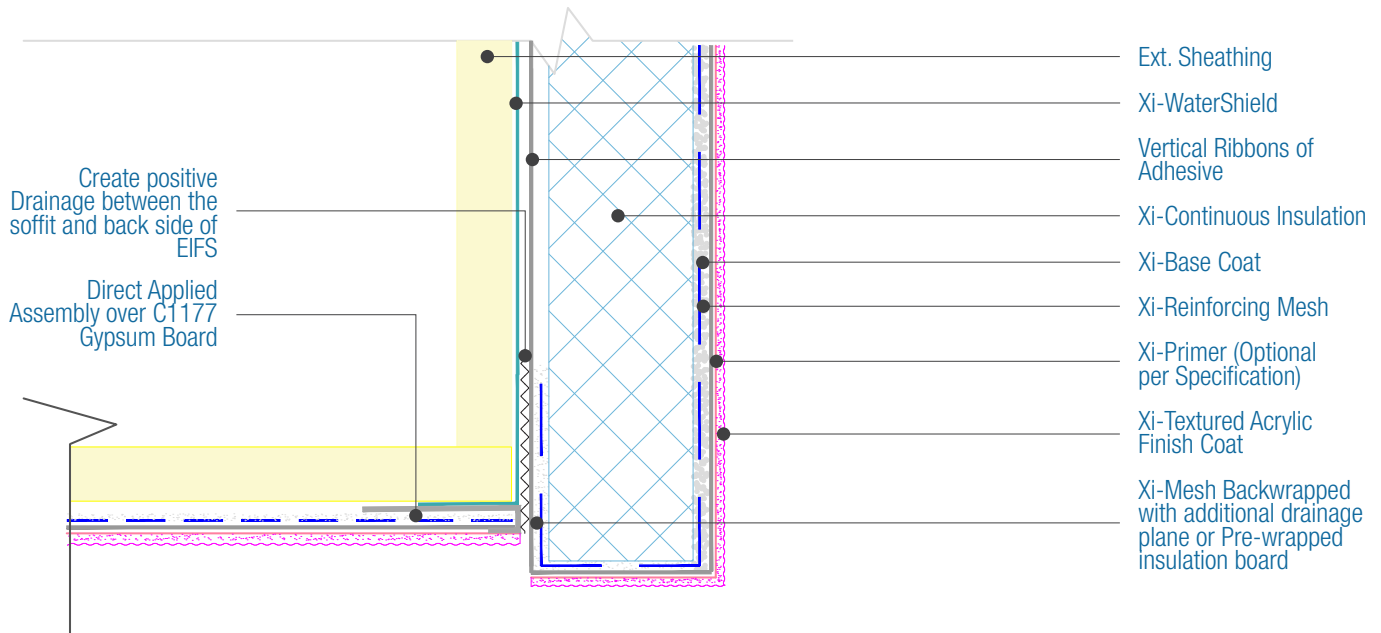
DISCLAIMER: FACADESXI details are recommendations that should be used for guidance only. There may be equivalent means of installation that are not shown in FACADESXI assembly details. All FACADESXI products shall be installed in accordance with FACADESXI product datasheets and all applicable building codes and industry standard practices. The design, engineering and final details incorporating any FACADESXI product are the sole responsibility of the project design professional. FACADESXI is not responsible for determining the acceptability and/or applicability of any FACADESXI product or detail for any specific project or condition. FACADESXI disclaims all liability for improper installation, workmanship, or design by a third-party. EXCEPT FOR ANY EXPRESS REPRESENTATIONS AND WARRANTIES BY FACADESXI, ALL IMPLIED WARRANTIES OF ANY KIND, INCLUDING BUT NOT LIMITED TO WARRANTIES OF MERCHANTABILITY OR FITNESS FOR A PARTICULAR PURPOSE OR COMPLIANCE WITH LAWS OR GOVERNMENT RULES OR REGULATIONS APPLICABLE TO THE PROJECT, ARE HEREBY DISCLAIMED. FACADESXI's website should always be consulted for the latest version of any details and/or product information. Contact FACADESXI for any technical assistance.



15262 Capital Port
 San Antonio, TX 78249
 1-833-899-0787
 facadesxi.com

WaterShield Xterior Insulation Fascia to Soffit

Date. 06-15-2021 | Detail. WSXI.IV.2 v1



NOTES:

1. For full assembly options, materials and placement of materials refer to the specific FACADESXI System specifications.
2. See DAFS specification for soffit application.
3. A water resistive barrier is not required on non exposed soffits, however if an air barrier is required, the full system should be installed. The lamina may not be installed directly over WaterShield.
4. Non-combustible construction may not use starter track at this location.

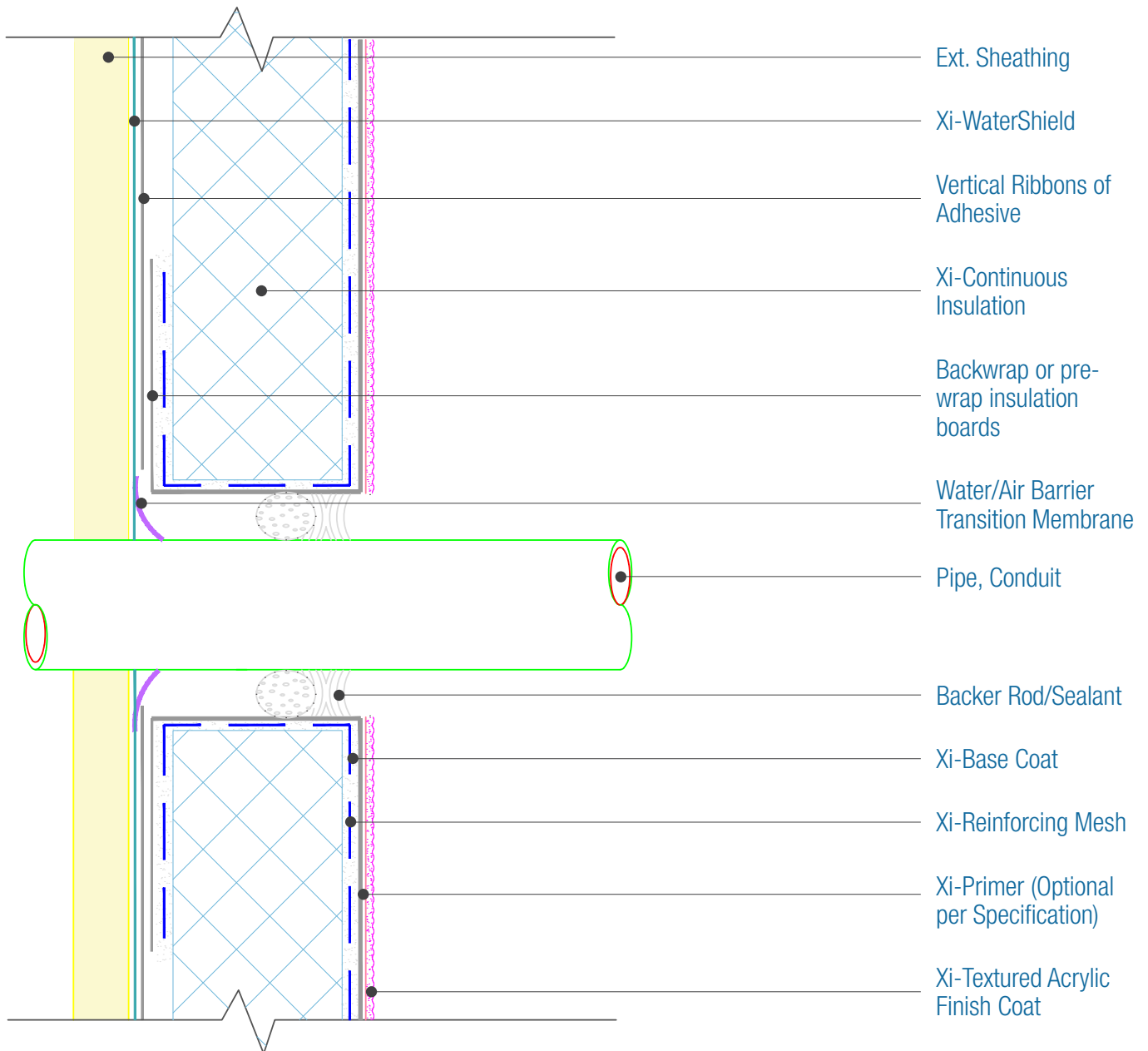
DISCLAIMER: FACADESXI details are recommendations that should be used for guidance only. There may be equivalent means of installation that are not shown in FACADESXI assembly details. All FACADESXI products shall be installed in accordance with FACADESXI product datasheets and all applicable building codes and industry standard practices. The design, engineering and final details incorporating any FACADESXI product are the sole responsibility of the project design professional. FACADESXI is not responsible for determining the acceptability and/or applicability of any FACADESXI product or detail for any specific project or condition. FACADESXI disclaims all liability for improper installation, workmanship, or design by a third-party. EXCEPT FOR ANY EXPRESS REPRESENTATIONS AND WARRANTIES BY FACADESXI, ALL IMPLIED WARRANTIES OF ANY KIND, INCLUDING BUT NOT LIMITED TO WARRANTIES OF MERCHANTABILITY OR FITNESS FOR A PARTICULAR PURPOSE OR COMPLIANCE WITH LAWS OR GOVERNMENT RULES OR REGULATIONS APPLICABLE TO THE PROJECT, ARE HEREBY DISCLAIMED. FACADESXI's website should always be consulted for the latest version of any details and/or product information. Contact FACADESXI for any technical assistance.



15262 Capital Port
San Antonio, TX 78249
1-833-899-0787
facadesxi.com

WaterShield Xterior Insulation Pipe/Conduit Penetration

Date. 06-15-2021 | Detail. WSXI.V.1 v1



NOTES:

1. For full assembly options, materials and placement of materials refer to the specific FACADESXI System specifications.
2. Pipe should be installed prior to the Cladding and the Water /air barrier transition membrane wrapped onto the pipe to create a water/air tight seal.
3. FXI WaterShield transition and accessory products and installation can be found in the project specifications, product datasheets and the WaterShield Details.

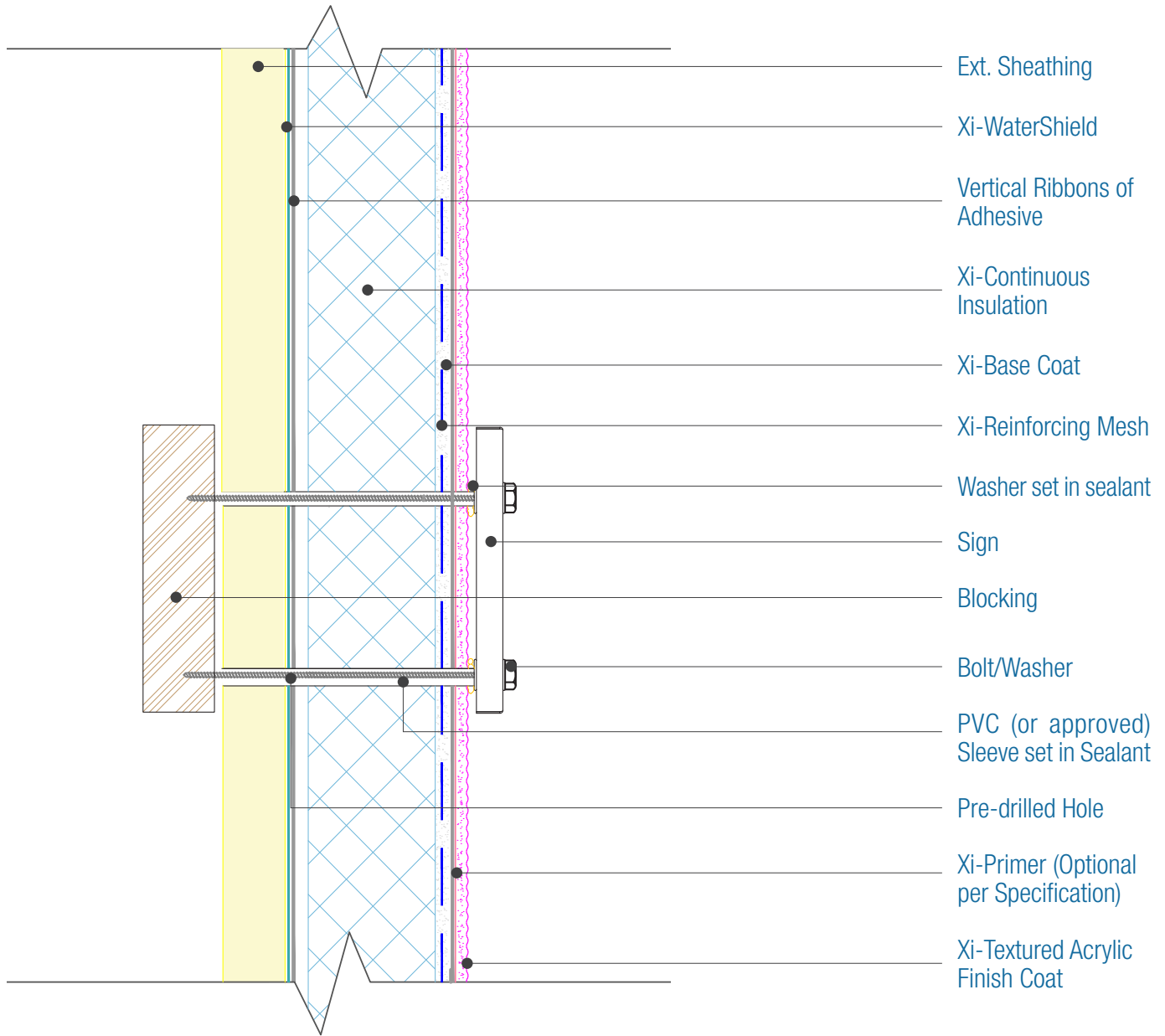
DISCLAIMER: FACADESXI details are recommendations that should be used for guidance only. There may be equivalent means of installation that are not shown in FACADESXI assembly details. All FACADESXI products shall be installed in accordance with FACADESXI product datasheets and all applicable building codes and industry standard practices. The design, engineering and final details incorporating any FACADESXI product are the sole responsibility of the project design professional. FACADESXI is not responsible for determining the acceptability and/or applicability of any FACADESXI product or detail for any specific project or condition. FACADESXI disclaims all liability for improper installation, workmanship, or design by a third-party. EXCEPT FOR ANY EXPRESS REPRESENTATIONS AND WARRANTIES BY FACADESXI, ALL IMPLIED WARRANTIES OF ANY KIND, INCLUDING BUT NOT LIMITED TO WARRANTIES OF MERCHANTABILITY OR FITNESS FOR A PARTICULAR PURPOSE OR COMPLIANCE WITH LAWS OR GOVERNMENT RULES OR REGULATIONS APPLICABLE TO THE PROJECT, ARE HEREBY DISCLAIMED. FACADESXI's website should always be consulted for the latest version of any details and/or product information. Contact FACADESXI for any technical assistance.



15262 Capital Port
 San Antonio, TX 78249
 1-800-611-6602
 facadesxi.com

WaterShield Xterior Insulation Sign Attachment

Date: 06-15-2021 | WSXI.V.2 v1



NOTES:

1. For full assembly options, materials and placement of materials refer to the specific FACADESXI System specifications
2. System must be sealed at all penetrations. It is recommended to install penetrations before the Cladding and sealing at the WaterShield layer.
3. Attach penetrations to structural member.

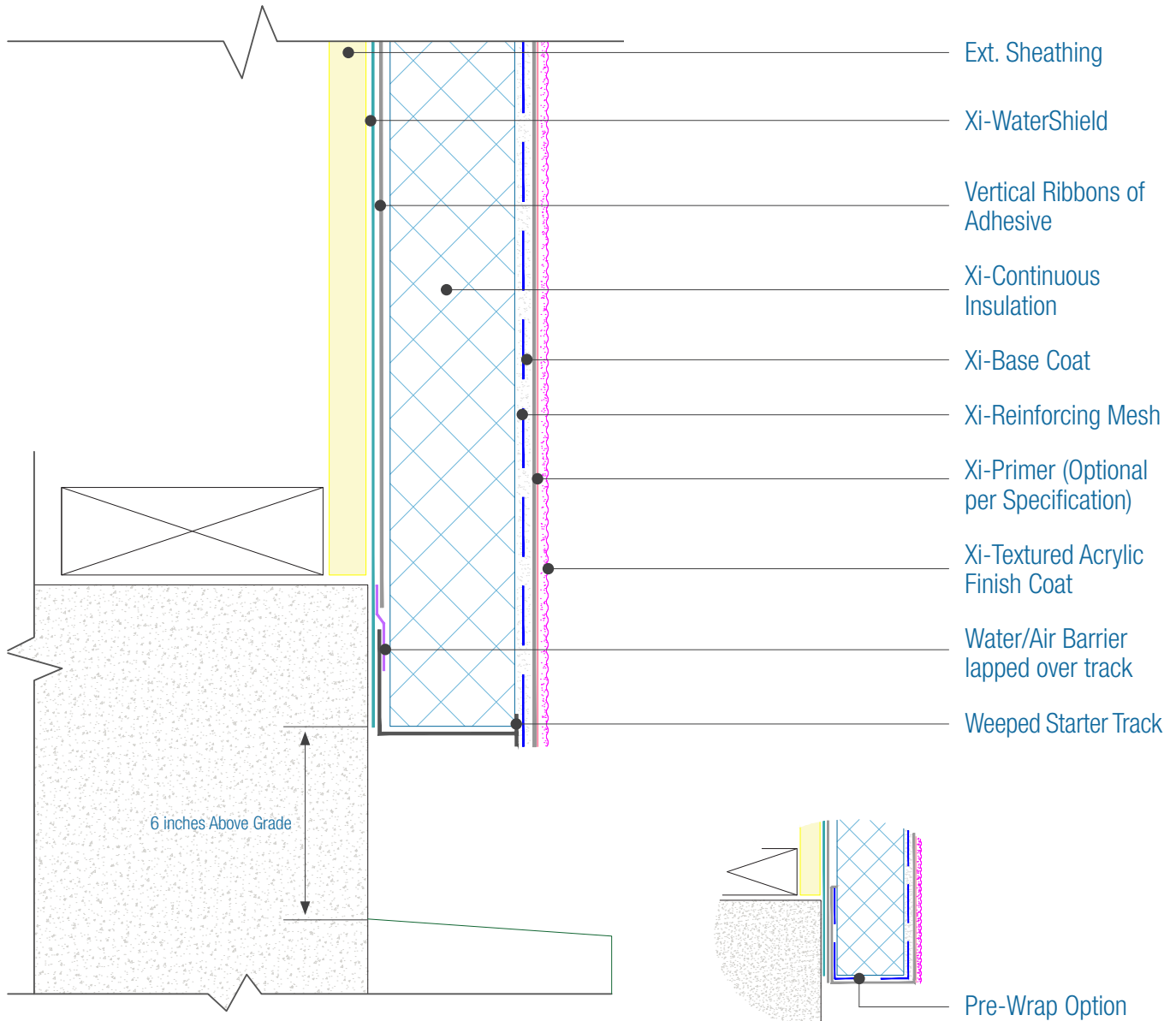
DISCLAIMER: FACADESXI details are recommendations that should be used for guidance only. There may be equivalent means of installation that are not shown in FACADESXI assembly details. All FACADESXI products shall be installed in accordance with FACADESXI product datasheets and all applicable building codes and industry standard practices. The design, engineering and final details incorporating any FACADESXI product are the sole responsibility of the project design professional. FACADESXI is not responsible for determining the acceptability and/or applicability of any FACADESXI product or detail for any specific project or condition. FACADESXI disclaims all liability for improper installation, workmanship, or design by a third-party. EXCEPT FOR ANY EXPRESS REPRESENTATIONS AND WARRANTIES BY FACADESXI, ALL IMPLIED WARRANTIES OF ANY KIND, INCLUDING BUT NOT LIMITED TO WARRANTIES OF MERCHANTABILITY OR FITNESS FOR A PARTICULAR PURPOSE OR COMPLIANCE WITH LAWS OR GOVERNMENT RULES OR REGULATIONS APPLICABLE TO THE PROJECT, ARE HEREBY DISCLAIMED. FACADESXI's website should always be consulted for the latest version of any details and/or product information. Contact FACADESXI for any technical assistance.



15262 Capital Port
 San Antonio, TX 78249
 1-833-899-0787
 facadesxi.com

WaterShield Xterior Insulation Termination at Grade

Date. 06-15-2021 | Detail. WSXI.VI.1 v1



NOTES:

1. FXI WaterShield transition and accessory products and installation can be found in the project specifications, product datasheets and the WaterShield Details.
2. Drainage must be continuous either behind the accessory or into a weeped track.
3. Assembly Termination: Minimum 6" above earth or as required by code.
4. High or Ultra High impact resistance is recommended on wall areas subjected to pedestrian traffic or other impact exposure and up to a minimum height of 6 foot above grade.

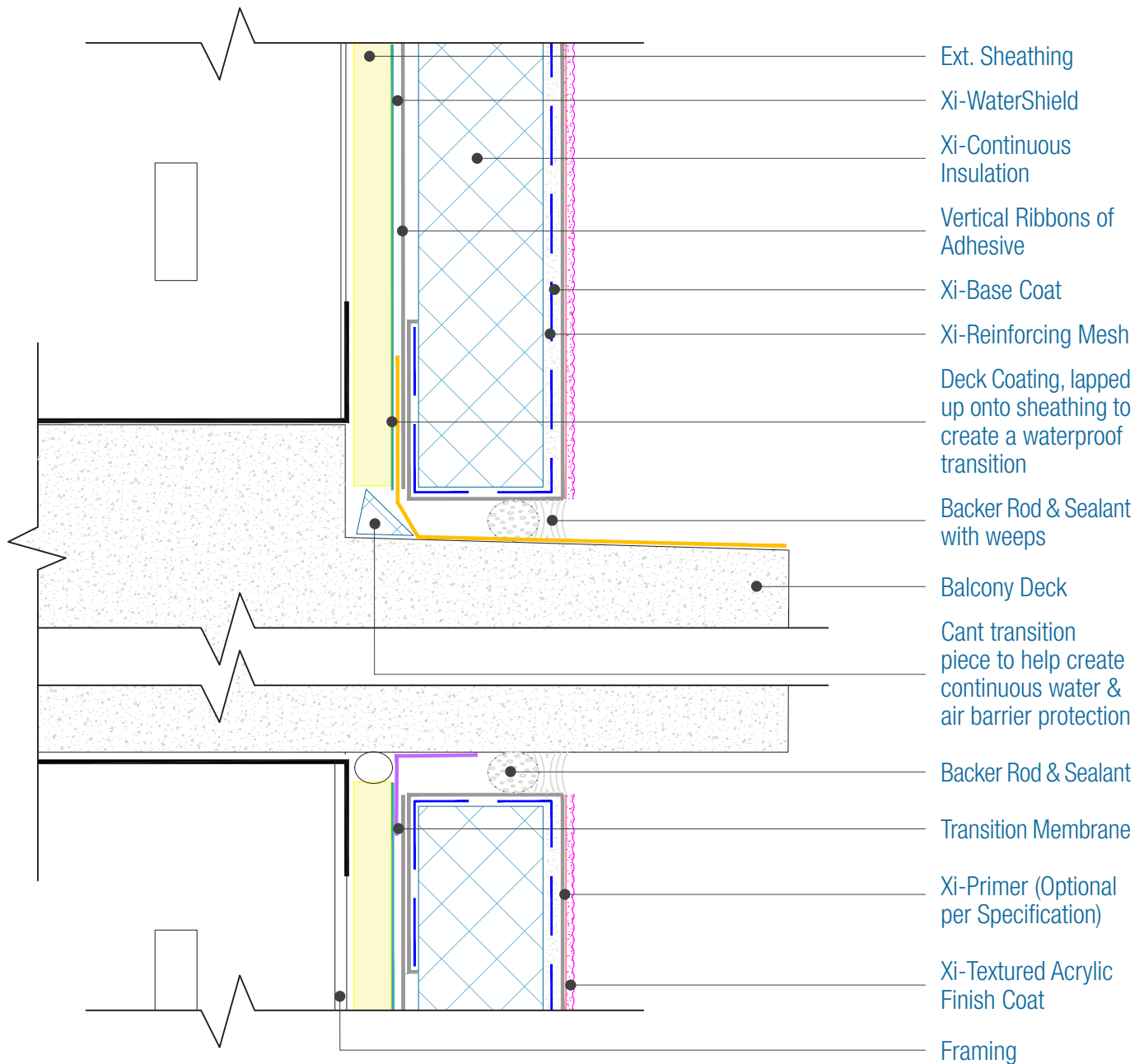
DISCLAIMER: FACADESXI details are recommendations that should be used for guidance only. There may be equivalent means of installation that are not shown in FACADESXI assembly details. All FACADESXI products shall be installed in accordance with FACADESXI product datasheets and all applicable building codes and industry standard practices. The design, engineering and final details incorporating any FACADESXI product are the sole responsibility of the project design professional. FACADESXI is not responsible for determining the acceptability and/or applicability of any FACADESXI product or detail for any specific project or condition. FACADESXI disclaims all liability for improper installation, workmanship, or design by a third-party. EXCEPT FOR ANY EXPRESS REPRESENTATIONS AND WARRANTIES BY FACADESXI, ALL IMPLIED WARRANTIES OF ANY KIND, INCLUDING BUT NOT LIMITED TO WARRANTIES OF MERCHANTABILITY OR FITNESS FOR A PARTICULAR PURPOSE OR COMPLIANCE WITH LAWS OR GOVERNMENT RULES OR REGULATIONS APPLICABLE TO THE PROJECT, ARE HEREBY DISCLAIMED. FACADESXI's website should always be consulted for the latest version of any details and/or product information. Contact FACADESXI for any technical assistance.



15262 Capital Port
San Antonio, TX 78249
1-833-899-0787
facadesxi.com

WaterShield Xterior Insulation Termination at Balcony

Date: 06-15-2021 | Detail: WSXI.VI.2 v1



NOTES:

1. FXI WaterShield transition and accessory products and installation can be found in the project specifications, product datasheets and the WaterShield Details.
2. Drainage must be provided behind backwrap by either using a drainage transition or pre-wrap insulation boards.
3. High or Ultra High impact resistance is recommended on wall areas subjected to pedestrian traffic or other exposure to impact.
4. Non FXI products are shown for the clarity of the FXI products only.

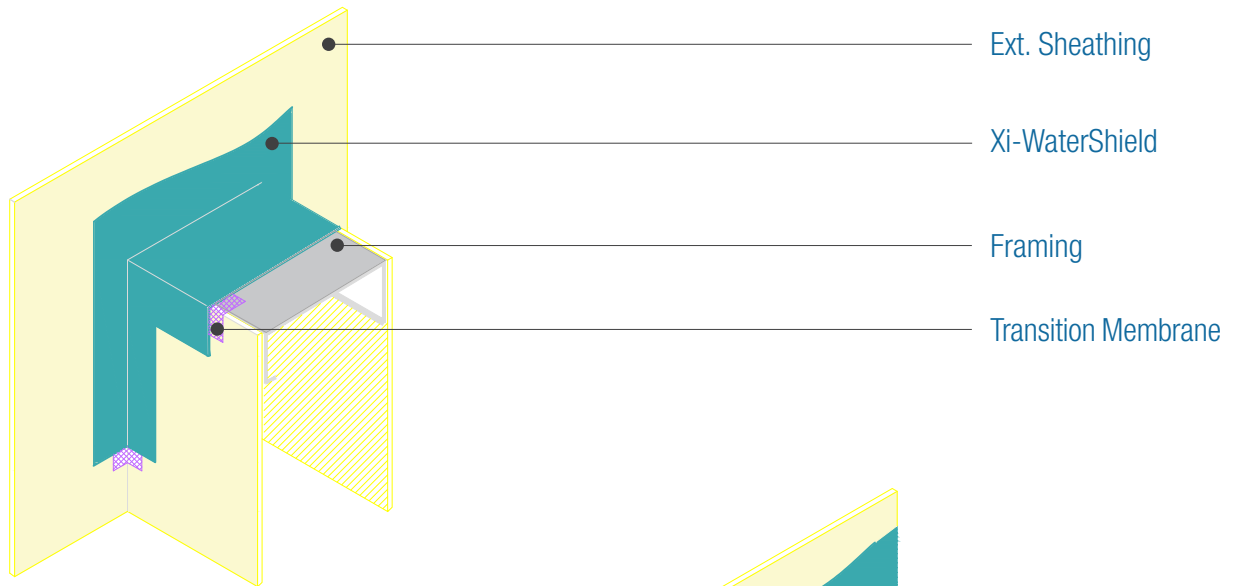
DISCLAIMER: FACADESXI details are recommendations that should be used for guidance only. There may be equivalent means of installation that are not shown in FACADESXI assembly details. All FACADESXI products shall be installed in accordance with FACADESXI product datasheets and all applicable building codes and industry standard practices. The design, engineering and final details incorporating any FACADESXI product are the sole responsibility of the project design professional. FACADESXI is not responsible for determining the acceptability and/or applicability of any FACADESXI product or detail for any specific project or condition. FACADESXI disclaims all liability for improper installation, workmanship, or design by a third-party. EXCEPT FOR ANY EXPRESS REPRESENTATIONS AND WARRANTIES BY FACADESXI, ALL IMPLIED WARRANTIES OF ANY KIND, INCLUDING BUT NOT LIMITED TO WARRANTIES OF MERCHANTABILITY OR FITNESS FOR A PARTICULAR PURPOSE OR COMPLIANCE WITH LAWS OR GOVERNMENT RULES OR REGULATIONS APPLICABLE TO THE PROJECT, ARE HEREBY DISCLAIMED. FACADESXI's website should always be consulted for the latest version of any details and/or product information. Contact FACADESXI for any technical assistance.



15262 Capital Port
San Antonio, TX 78249
1-833-899-0787
facadesxi.com

WaterShield Xterior Insulation Saddle Flashing

Date. 06-15-2021 | Detail. WSXI.VII.3 v1



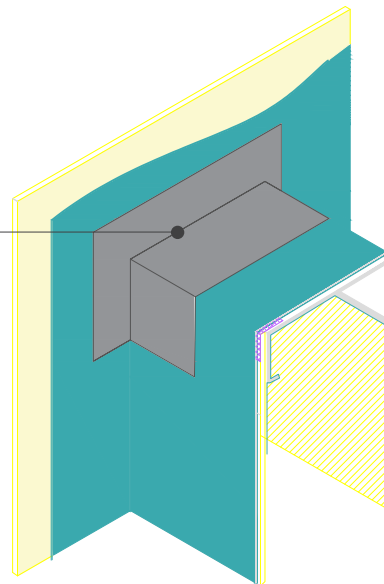
Ext. Sheathing

Xi-WaterShield

Framing

Transition Membrane

Saddle Flashing



NOTE: After Saddle Flashing is installed. EIFS is installed per Roof Flashing, Parapet Flashing, Termination into dissimilar Material and Drainage Details.

NOTES:

1. FXI WaterShield transition and accessory products and installation can be found in the project specifications, product datasheets and the WaterShield Details.
2. Responsibility of the flashing is not necessarily that of the plastering contractor and should be denoted in the contract documents.

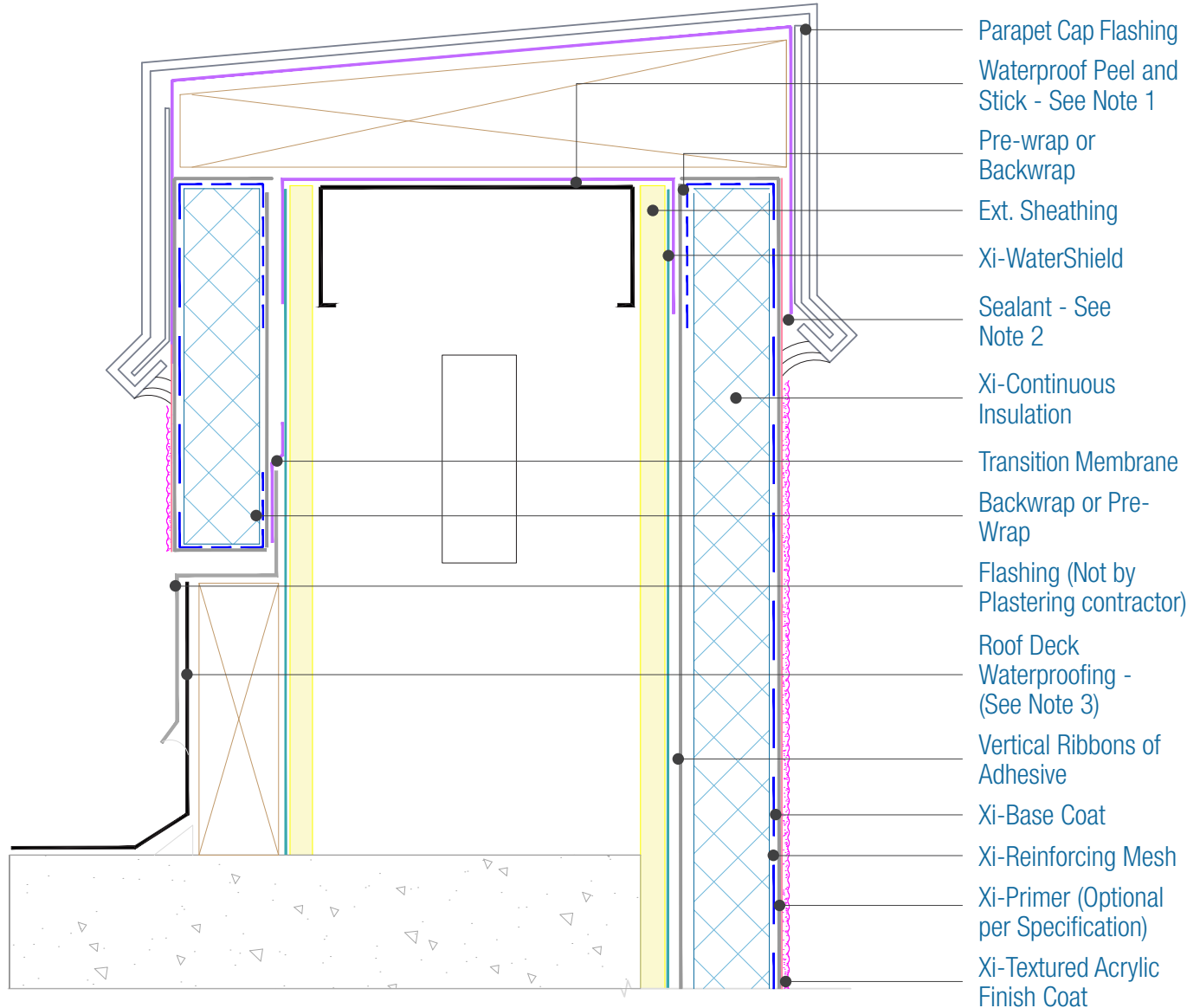
DISCLAIMER: FACADESXI details are recommendations that should be used for guidance only. There may be equivalent means of installation that are not shown in FACADESXI assembly details. All FACADESXI products shall be installed in accordance with FACADESXI product datasheets and all applicable building codes and industry standard practices. The design, engineering and final details incorporating any FACADESXI product are the sole responsibility of the project design professional. FACADESXI is not responsible for determining the acceptability and/or applicability of any FACADESXI product or detail for any specific project or condition. FACADESXI disclaims all liability for improper installation, workmanship, or design by a third-party. EXCEPT FOR ANY EXPRESS REPRESENTATIONS AND WARRANTIES BY FACADESXI, ALL IMPLIED WARRANTIES OF ANY KIND, INCLUDING BUT NOT LIMITED TO WARRANTIES OF MERCHANTABILITY OR FITNESS FOR A PARTICULAR PURPOSE OR COMPLIANCE WITH LAWS OR GOVERNMENT RULES OR REGULATIONS APPLICABLE TO THE PROJECT, ARE HEREBY DISCLAIMED. FACADESXI's website should always be consulted for the latest version of any details and/or product information. Contact FACADESXI for any technical assistance.



15262 Capital Port
San Antonio, TX 78249
1-833-899-0787
facadesxi.com

WaterShield Xterior Insulation Parapet

Date: 06-15-2021 | Detail: WSXI.VII.1 v1



NOTES:

1. FXI WaterShield transition and accessory products and installation can be found in the project specifications, product datasheets and the WaterShield Detail.
2. Sealant should be omitted if the Parapet assembly must drain at this location.
3. Flashing should extend 2" minimum onto the face of the EIFS.
4. Responsibility of the flashing is not necessarily that of the plastering contractor and should be denoted in the contract documents.

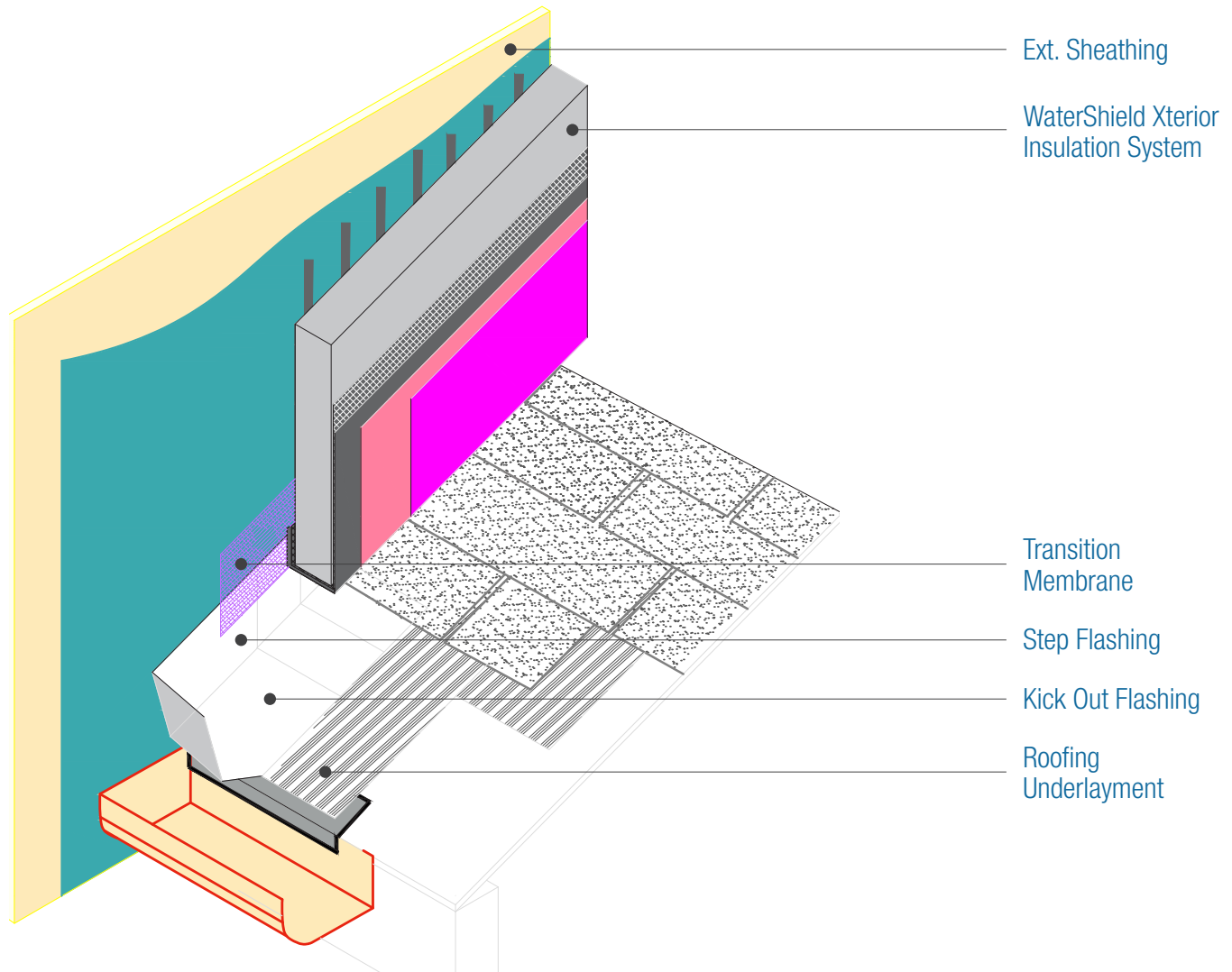
DISCLAIMER: FACADESXI details are recommendations that should be used for guidance only. There may be equivalent means of installation that are not shown in FACADESXI assembly details. All FACADESXI products shall be installed in accordance with FACADESXI product datasheets and all applicable building codes and industry standard practices. The design, engineering and final details incorporating any FACADESXI product are the sole responsibility of the project design professional. FACADESXI is not responsible for determining the acceptability and/or applicability of any FACADESXI product or detail for any specific project or condition. FACADESXI disclaims all liability for improper installation, workmanship, or design by a third-party. EXCEPT FOR ANY EXPRESS REPRESENTATIONS AND WARRANTIES BY FACADESXI, ALL IMPLIED WARRANTIES OF ANY KIND, INCLUDING BUT NOT LIMITED TO WARRANTIES OF MERCHANTABILITY OR FITNESS FOR A PARTICULAR PURPOSE OR COMPLIANCE WITH LAWS OR GOVERNMENT RULES OR REGULATIONS APPLICABLE TO THE PROJECT, ARE HEREBY DISCLAIMED. FACADESXI's website should always be consulted for the latest version of any details and/or product information. Contact FACADESXI for any technical assistance.



15262 Capital Port
San Antonio, TX 78249
1-833-899-0787
facadesxi.com

WaterShield Xterior Insulation Kick Out Flashing

Date. 06-15-2021 | Detail. WSXI.VII.2 v1



Ext. Sheathing

WaterShield Xterior
Insulation System

Transition
Membrane

Step Flashing

Kick Out Flashing

Roofing
Underlayment

NOTES:

1. Kick out Flashing: Installed with watertight seams, be corrosion resistant, extend 1" beyond the EIFS.
2. Means of drainage must be provide at roof termination.
3. Terminate System 2 inches above roof.
4. Step Flashing must be 2 inches behind the system and 4 inches in height.
5. Roof Underlayment should extend up onto the wall under the flashing.
6. Metal Flashing is installed and designed by others, is not necessarily the responsibility of the plastering contractor and should be denoted in the contract documents.

DISCLAIMER: FACADESXI details are recommendations that should be used for guidance only. There may be equivalent means of installation that are not shown in FACADESXI assembly details. All FACADESXI products shall be installed in accordance with FACADESXI product datasheets and all applicable building codes and industry standard practices. The design, engineering and final details incorporating any FACADESXI product are the sole responsibility of the project design professional. FACADESXI is not responsible for determining the acceptability and/or applicability of any FACADESXI product or detail for any specific project or condition. FACADESXI disclaims all liability for improper installation, workmanship, or design by a third-party. EXCEPT FOR ANY EXPRESS REPRESENTATIONS AND WARRANTIES BY FACADESXI, ALL IMPLIED WARRANTIES OF ANY KIND, INCLUDING BUT NOT LIMITED TO WARRANTIES OF MERCHANTABILITY OR FITNESS FOR A PARTICULAR PURPOSE OR COMPLIANCE WITH LAWS OR GOVERNMENT RULES OR REGULATIONS APPLICABLE TO THE PROJECT, ARE HEREBY DISCLAIMED. FACADESXI's website should always be consulted for the latest version of any details and/or product information. Contact FACADESXI for any technical assistance.

FACADESXI